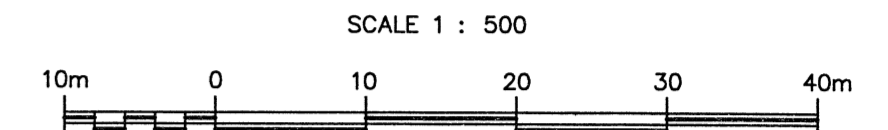


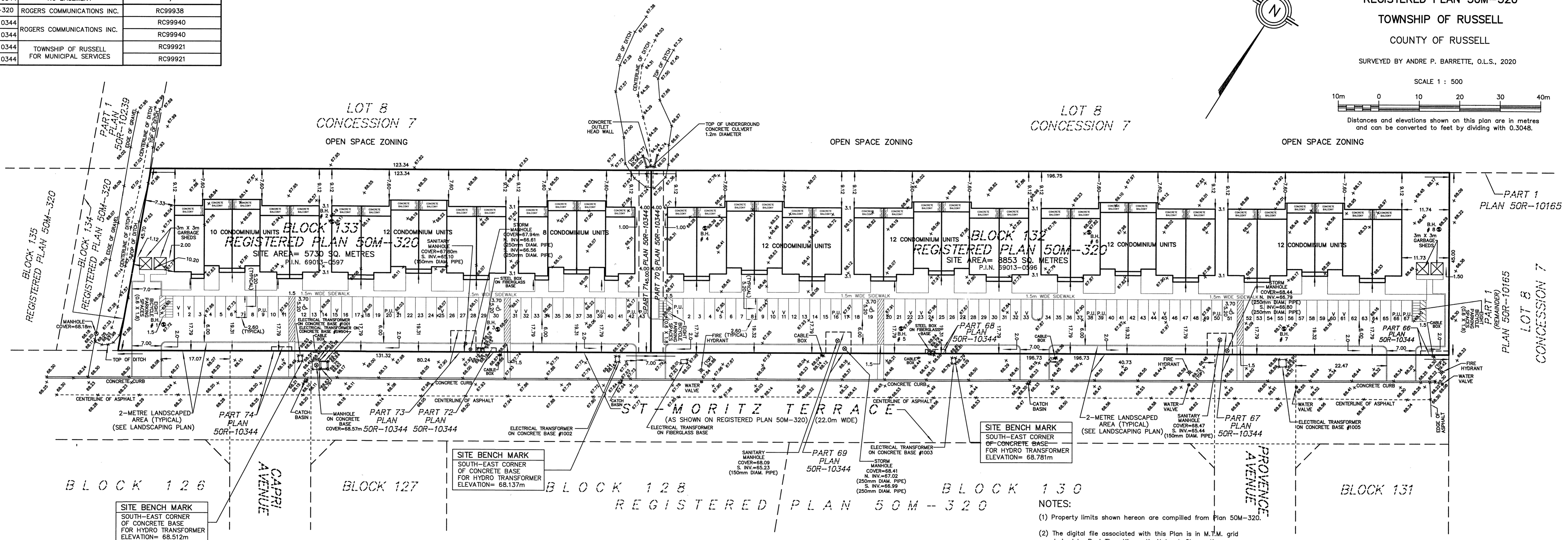
SCHEDULE OF EASEMENTS			
PART OR BLOCK	PLAN	IN FAVOUR OF	INST. No.
BLOCK 132	50M-320	ROGERS COMMUNICATIONS INC.	RC99938
PART 70	50R-10344	TOWNSHIP OF RUSSELL FOR MUNICIPAL SERVICES	RC99921
PART 69	50R-10344		RC99921
PART 67	50R-10344		RC99921
PART 68	50R-10344	ROGERS COMMUNICATIONS INC.	RC99940
PART 66	50R-10344	NO EASEMENT	N/A
BLOCK 133	50M-320	ROGERS COMMUNICATIONS INC.	RC99938
PART 74	50R-10344	ROGERS COMMUNICATIONS INC.	RC99940
PART 72	50R-10344		RC99940
PART 73	50R-10344		RC99921
PART 71	50R-10344		RC99921

TOPOGRAPHIC SITE PLAN
OF
BLOCKS 132 AND 133
REGISTERED PLAN 50M-320
TOWNSHIP OF RUSSELL
COUNTY OF RUSSELL

SURVEYED BY ANDRE P. BARRETTE, O.L.S., 2020



Distances and elevations shown on this plan are in metres and can be converted to feet by dividing with 0.3048.



SITE BENCH MARK
SOUTH-EAST CORNER
OF CONCRETE BASE
FOR HYDRO TRANSFORMER
ELEVATION= 68.781m

SITE BENCH MARK
SOUTH-EAST CORNER
OF CONCRETE BASE
FOR HYDRO TRANSFORMER
ELEVATION= 68.137m

SITE BENCH MARK
SOUTH-EAST CORNER
OF CONCRETE BASE
FOR HYDRO TRANSFORMER
ELEVATION= 68.512m

- LEGEND:
- P.I.N. denotes Property Identifier Number
 - x 87.85 denotes a measured elevation at the location of the "X"
 - M.T.M. denotes 3-degree Modified Transverse Mercator projection
 - O.R.P. denotes Observed Reference Point
 - G.N.S.S. denotes Global Navigation Satellite System
 - B.H. denotes Bore Holes

- NOTES:
- (1) Property limits shown hereon are compiled from Plan 50M-320.
 - (2) The digital file associated with this Plan is in M.T.M. grid derived by Real Time Kinematic Network Observations (using the Leica Smartnet G.N.S.S. precision wide area network), M.T.M. Zone 9, NAD83(CRS v6) Epoch 2010.00.
 - (3) Distances are ground and can be converted to grid by multiplying by the combined scale factor of 1.00000584.
 - (4) Elevations shown hereon are geodetic, derived from the Geodetic Survey of Canada Bench Mark 0011913U498 with a published elevation of 68.718 metres (CGVD28: 78).
 - (5) It is the responsibility of the building contractor or any other contractor to have the underground services located by the respective utility companies prior to undertaking any type of excavation.
 - (6) This plan does not purport to illustrate the location of underground services.
 - (7) This plan is not valid unless it is an embossed original copy issued by the surveyor.

SURVEYOR'S CERTIFICATE:
I certify that the field survey represented on this plan was completed on June 23, 2020.

July 5, 2020
Andre P. Barrette
Andre P. Barrette
Ontario Land Surveyor

Arpentages SCHULTZ BARRETTE Surveying
Ontario Land Surveyors
Hawkesbury, Ontario
Tel: 613-632-7611 Fax: 613-632-2897
Job No. 18494(6) Ref. No. 50M-320-3