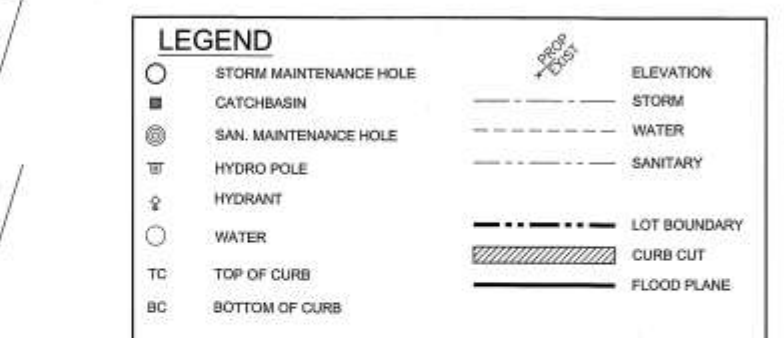


STRUCTURE DETAILS

STRUCTURE	SIZE	TOP OF GRATE	NORTH INVERT	EAST INVERT	SOUTH INVERT	WEST INVERT
CBMH1	1200x90	88.32	N/A	N/A	87.13	N/A
CBMH2	1200x90	88.50	88.50	N/A	86.90	86.90
CB3	800x600	88.50	87.27	N/A	N/A	N/A
CBMH4	270x250	88.07	N/A	86.83	N/A	86.01



- ### GENERAL NOTES:
- CONTRACTOR TO VERIFY ALL DIMENSIONS AND SITE CONDITIONS AND BRING ANY DISCREPANCY TO THE ATTENTION OF THE ENGINEER.
 - CONTRACTOR TO ABIDE BY ALL APPLICABLE LEGISLATION, TOWNSHIP OF RUSSEL SPECIFICATIONS, MOE REGULATIONS, AND BEST TRADE PRACTICES.
 - THE LOCATION OF UTILITIES, WHERE SHOWN, IS APPROXIMATE ONLY, AND THE EXACT LOCATION MUST BE DETERMINED BY CONTACTING THE PROPER AUTHORITIES CONCERNED. THE CONTRACTOR MUST PROVE THE LOCATION OF UTILITIES AND SHALL BE RESPONSIBLE FOR THEIR ADEQUATE PROTECTION FROM DAMAGE DURING CONSTRUCTION.
 - GENERAL CONTRACTOR AND SUB CONTRACTOR TO COMMUNICATE TO AND FROM THE ENGINEER IN ENGLISH ONLY.
 - EXISTING ASPHALT PAVEMENT IS TO BE CONSTRUCTED WITH 150mm GRANULAR 'A' and 40mm HL4 BINDER, 40mm HL3 SURFACE COURSE GRANULARS TO BE COMPACTED TO 100% STANDARD PROCTOR DENSITY AND ASPHALT TO BE COMPACTED TO 95% MARSHALL DENSITY. COMPACTION OF GRANULAR 'A' TO BE TESTED BY AN INDEPENDENT COMPANY WITH COPIES OF ALL REPORTS SENT TO THE HSP ENGINEER.
 - ALL SITE CURBING TO BE INSTALLED AS PER OPSD 800.110. CONCRETE IS TO BE 32 MPa WITH 7% AIR.
 - CONCRETE SIDEWALKS, SLABS AND PLANTERS ARE TO BE CONSTRUCTED WITH 150mm GRANULAR A AND 32 MPa CONCRETE (125mm THICK) WITH 54% AIR, AS PER OPSD 310.010.
 - 3mm PREMOULDED FIBREBOARD EXPANSION JOINTS ARE REQUIRED IN ALL SIDEWALKS AT INTERVALS OF 6.0m, ALONG SIDEWALK WHERE CURB ABUTS, AT ALL ENDS OF DEPRESSED SIDEWALK, AND TO ISOLATE OBSTRUCTIONS.
 - WELDED WIRE MESH (WWM) TO BE AS PER ASTM 185-02.
 - WM TO HAVE MINIMUM OF 3" COVER FROM THE INSIDE EDGE OF THE FORMWORK.
 - INSTALL 6MIL POLY VAPOUR BARRIER BETWEEN CONCRETE SLAB AND GRANULAR BASE.
 - THE WIRE TO BE USED TO SECURE WWM TOGETHER.
 - SOIL UNDERLYING THE SLAB TO HAVE MIN. COMPRESSIVE STRENGTH OF 75 kPa.

- ### BEDDING MATERIALS:
- ALL BEDDING MATERIALS TO CONFORM TO OPS STANDARDS AND SPECIFICATIONS.
 - GRANULAR A BEDDING MATERIAL TO BE IN ACCORDANCE WITH OPSD 1010, 314, 501 AND INSTALLED TO OPSD 708.030, 802.010M (GRAN. 'A' ONLY), AND 802.030M (CLASS B, GRAN. 'A' BEDDING AND COVER).
 - ALL BEDDING TO BE COMPACTED TO 95% STANDARD PROCTOR DENSITY AND TESTED BY AN INDEPENDENT COMPANY. HSP ENGINEER TO RECEIVE COPIES OF ALL TESTING REPORTS.
 - BACKFILL MAY CONSIST OF EXCAVATED SILT AND SAND AND/OR GLACIAL TILL AND TO BE COMPACTED TO 95% STANDARD PROCTOR DENSITY IN 300mm LIFTS.

- ### SITE STORM SEWERS:
- PIPING MATERIAL TO BE PVC SDR35 (GREEN ONLY).
 - GRANULAR 'W' BEDDING MATERIAL TO BE INSTALLED AS PER ABOVE.
 - STORM SEWERS SHALL BE INSULATED AS PER OPSD 1109.030 Nov 2015
 - CONNECTION AT EXISTING STORM SEWER SHALL BE THROUGH A 300x300 MANUFACTURED TEE.

- ### SPACING REQUIREMENTS:
- AT ALL SEWER CROSSINGS, THE WATERMAIN SHALL BE LOCATED ABOVE THE SEWER. IF NOT FEASIBLE, THEN THE WATERMAIN SHALL GO BELOW WITH A MINIMUM SEPARATION OF 0.5m, AS PER MOE REQUIREMENTS.

- ### MAINTENANCE HOLES AND CATCHBASINS:
- ADJUSTMENT UNITS AS PER OPSD 704.010.
 - CBMH1 AND CBMH2 SHALL BE 1200mm X 1200mm AS PER OPSD 701.010.
 - CB3 SHALL BE 600mm X 600mm AS PER OPSD 706.010.
 - CATCH BASIN LIDS TO BE AS PER OPSD 401.010.
 - CBMH2 SHALL BE EQUIPPED WITH HYDROVEX 200VH-2 FLOW RESTRICTOR AT THE OUTLET RATED FOR 89 L/s WITH A HEAD OF 1.5m.

- ### GRADING REQUIREMENTS:
- EMBANKMENTS MUST NOT EXCEED 3:1 IN SLOPE.

- ### PAVEMENT & CURBS:
- EXISTING ASPHALT TO BE REMOVED AND REINSTALLED.
 - EXTENDED PARKING AREA TO BE INSTALLED WITH 300mm GRANULAR 'B' TYPE II, 150mm GRANULAR 'A', 40mm HL4 BINDER, 40mm HL3 SURFACE COURSE.

Building Properties

Area	Square Footage
Building	4843
Addition	5285
Demolition	1615
Total Building Area	10133
Show Room Area	3000
Warehouse Area	7133

PLANNING DEVELOPMENT INFO

ZONING: GENERAL COMMERCIAL GC

LOT AREA: 3,817 m².

PARKING REQUIRED: 15
PARKING PROVIDED: 28 (INCL. 2 BARRIER FREE)

LANDSCAPE SPACE REQUIRED: 361.7m² (10%)
LANDSCAPE SPACE PROVIDED: 801m² (25%)

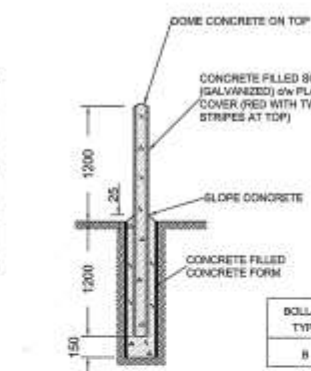
GARBAGE STORAGE: INTERNAL

BUILDING AREA/GROSS AREA: 960m²

LEGAL DESCRIPTION
PART 20, 21, AND 24 OF LOT B, CONCESSION 8
EMBRUN, COUNTY OF PRESCOTT AND RUSSEL

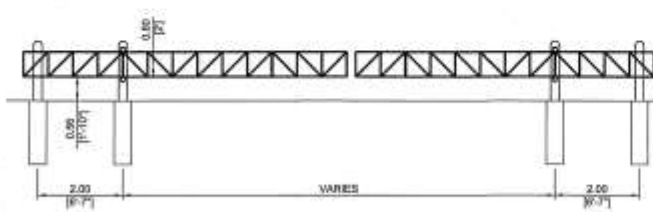
EX. BUILDING AREA = 450 m²
EX. PARKING (APPROX.) = 30 SPOTS
EX. S.F. PARKING = 2 SPOTS
EX. LOADING SPACES = 1 SPOTS

INFORMATION OBTAINED FROM PLAN OF SURVEY
PREPARED BY K.L. STODWILL

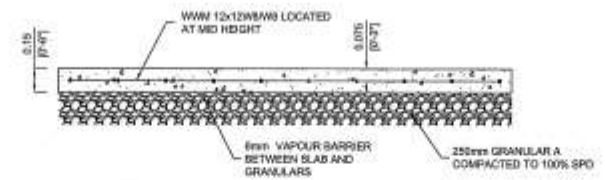


BOLLARD DETAIL SCALE: 1:25

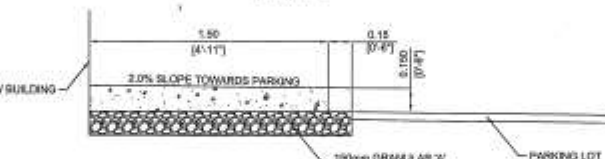
BOLLARD TYPE	BOLLARD DIAMETER	CONC. FORM DIAMETER
B	150mm	250mm



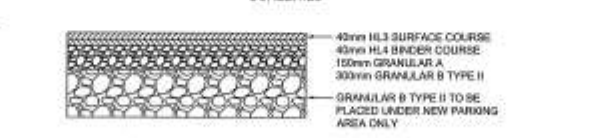
PROPOSED GATE ELEVATION
SCALE: 1:75



CONCRETE SLAB DETAIL
SCALE: 1:20



PROPOSED SIDEWALK
SCALE: 1:20



ASPHALT STRUCTURE
SCALE: 1:20

REVISION		DATE	BY	APP. BY
1	ISSUE			

	HSP Inc. 103 Wrenner Drive Long Sault, ON Canada K0C 1P0 T: 613-932-3289 F: 613-932-4125 www.hsp.ca
--	--

--	--

PROJECT: BENSON AUTOPARTS EMBRUN EXPANSION	
PROPOSED GRADING AND SERVICING	
DESIGNED BY: 1.00VE CHECKED BY: 1.00VE SCALE: 1:500	DATE: FEBRUARY 28, 2018 DESIGNED BY: K.McDONALD DRAWING NO.: SP1 SHEET NO.: 8520