

**Township of Russell
Municipalité de Russell**

**Official Plan - Plan officiel
Schedule - Annexe 'A1'**

**Land Use Designations
Affectation des sols
Embrun**






FINAL - United Counties of Prescott and Russell Approval, April 22, 2026 / FINAL – Comtés unis de Prescott et Russell approbation, 22 avril 2026

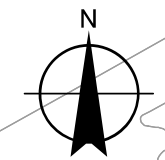
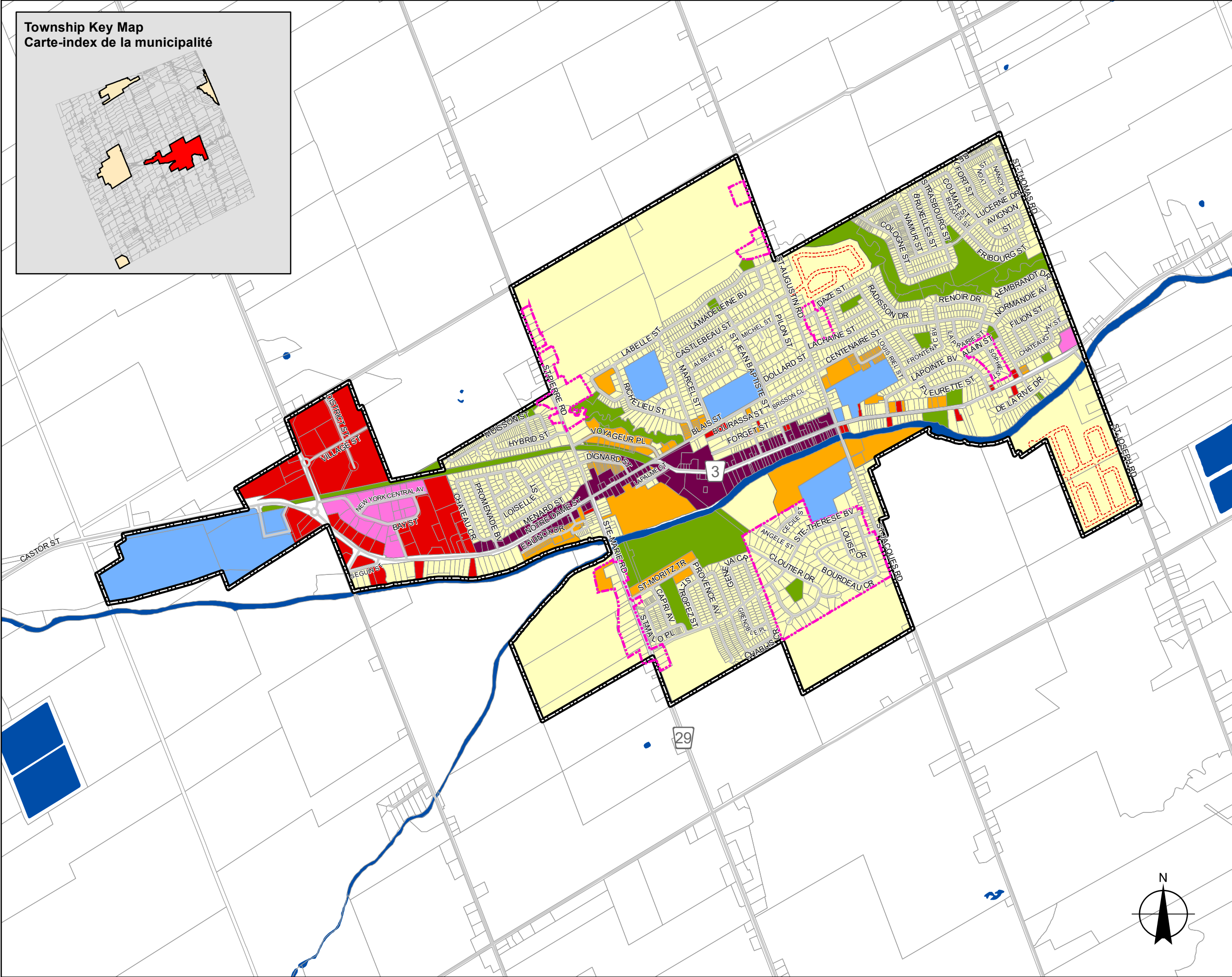
Legend / Légende

Land Use Designations - Affectation des sols

-  Residential - Résidentielle
-  Multi-Unit Residential - Immeubles résidentiels à logements multiples
-  Village Core - Centre du village
-  Commercial - Commerciale
-  Community Facility - Établissement communautaire
-  Business Park - Parcs d'affaires
-  Open Space - Espaces verts

Other - Autres

-  Village Settlement Area Boundary - Limites du village
-  Property Boundaries - Limites de propriété
-  Proposed Road - Chemin proposé
-  Road - Chemin
-  Privately or Partially Served Area - Zone de services privés ou partiels



Source: UCPR

