

Township of Russell
Municipalité de Russell

Official Plan - Plan officiel
Schedule - Annexe 'A2'

Land Use Designations
Affectation des sols
Russell







FINAL - United Counties of Prescott and Russell Approval,
April 22, 2026 / FINAL – Comtés unis de Prescott et Russell
approbation, 22 avril 2026

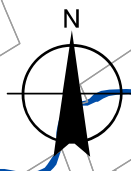
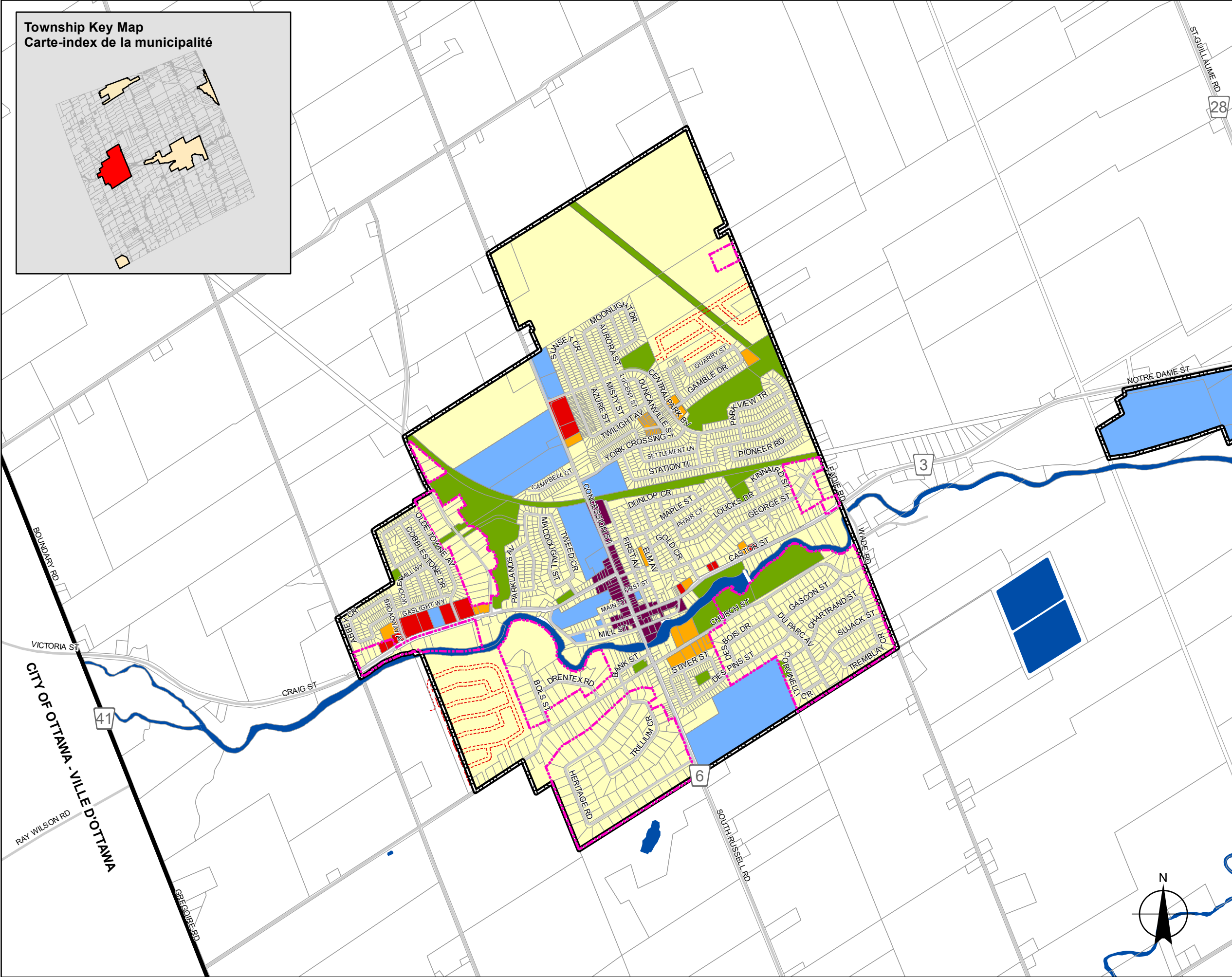
Legend / Légende

Land Use Designations - Affectation des sols

-  Residential - Résidentielle
-  Multi-Unit Residential - Immeubles résidentiels à logements multiples
-  Village Core - Centre du village
-  Commercial - Commerciale
-  Community Facility - Établissement communautaire
-  Open Space - Espaces verts

Other - Autres

-  Village Settlement Area Boundary - Limites du village
-  Township of Russell Boundary - Limites de la Municipalité de Russell
-  Property Boundaries - Limites de propriété
-  Proposed Road - Chemin proposé
-  Road - Chemin
-  Privately or Partially Served Area – Zone de services privés ou partiels



Source: UCPR

