

# TOWNSHIP OF RUSSELL

## Capital Projects

<b>Project</b>	C0115-22079 Sharepoint Software		
<b>Department</b>	CAO		
<b>Version</b>	Approved Budget	<b>Year</b>	2022

### Description

## Project Description

**Project Summary:** Purchase and implementation of software to provide a central records storage repository, enable automated records disposition workflow and automate end-to-end business processes within the Microsoft SharePoint Online platform.

**Study:** N/A

**Level of Service Impact:** Improve the Corporation's efficiency in records management, records storage and provide access to our records through an Online/Intranet platform.

**Annual Requirement Impact:** The maintenance and updates to this software will slightly increase the annual requirement by \$20,000

**Sommaire du Projet:** Achat et mise en oeuvre de logiciel pour fournir un référentiel central de stockage, activer le flux de travail automatisé et automatiser les processus de travail par la plateforme Microsoft SharePoint.

**Impact sur le niveau de service:** Amélioration de la gestion des dossiers et le stockage de dossiers et fournira un accès en-ligne/intranet.

**Impact sur le besoin annuel:** L'entretien et les mises à jours de ce logiciel augmentera le besoin annuel de 20000 \$.

### Budget

	Total	2022	2023	2024	2025	2026	2027-2031	2028
<b>Expenditures</b>								
<b>Material &amp; Supplies</b>								
Materials	200,000	200,000						
	200,000	200,000						
<b>Expenditures Total</b>	<b>200,000</b>	<b>200,000</b>						
<b>Funding</b>								
<b>Reserves</b>								
Reserve - Specific Project (General)	70,000	70,000						
	70,000	70,000						
<b>Grants - Other Prov &amp;/or Fed</b>								
Provincial Grant	130,000	130,000						
	130,000	130,000						
<b>Funding Total</b>	<b>200,000</b>	<b>200,000</b>						

# TOWNSHIP OF RUSSELL

## Capital Projects

<b>Project</b>	C0120-22080 Payables Module		
<b>Department</b>	Finances		
<b>Version</b>	Approved Budget	<b>Year</b>	2022

### Description

## Project Description

**Project Summary:** Automate & streamline payable process by retrieving invoices directly from e-mail, improve search & retrieval of documents and simplify audit

**Study:** N/A

**Level of Service Impact:** Improved Efficiency

**Annual Requirement Impact:** \$3,000

**Sommaire du projet:** Automatiser et rationaliser le processus de payables en automatisant la capture de documents à partir de courriels, améliorer la recherche de document et simplifier l'audit

**Étude:** S/O

**Impact sur le niveau de service :** Efficacité Améliorée

**Impact sur le besoin annuel :** 3000\$

### Budget

	Total	2022	2023	2024	2025	2026	2027-2031	2028
<b>Expenditures</b>								
<b>Material &amp; Supplies</b>								
Materials	30,000	30,000						
	30,000	30,000						
<b>Expenditures Total</b>	<b>30,000</b>	<b>30,000</b>						
<b>Funding</b>								
<b>Reserves</b>								
Reserve - Specific Project (General)	10,500	10,500						
	10,500	10,500						
<b>Grants - Other Prov &amp;/or Fed</b>								
Provincial Grant	19,500	19,500						
	19,500	19,500						
<b>Funding Total</b>	<b>30,000</b>	<b>30,000</b>						

# TOWNSHIP OF RUSSELL

## Capital Projects

<b>Project</b>	C0125-22081 HVAC - RTU1 & RTU2		
<b>Department</b>	Townhall Mtce		
<b>Version</b>	Approved Budget	<b>Year</b>	2022

### Description

## Project Description

**Project Summary:** Engineering to prepare for replacement of remaining 2 HVAC units RTU#1 & RTU#3 in 2023  
**Study:** BPA Condition Assessment  
**Level of Service Impact:** Maintain  
**Annual Requirement Impact:** N/A

**Sommaire du projet:** Frais d'ingénieurs en préparation du remplacement des 2 dernières unités CVAC RTU#1 & RTU#3  
**Étude:** Étude de condition par BPA  
**Impact sur le niveau de service:** Maintenir  
**Impact sur le besoin annuel:** S/O

### Budget

	Total	2022	2023	2024	2025	2026	2027-2031	2028
<b>Expenditures</b>								
<b>Material &amp; Supplies</b>								
Materials	10,000	10,000						
	10,000	10,000						
<b>Expenditures Total</b>	<b>10,000</b>	<b>10,000</b>						
<b>Funding</b>								
<b>Reserves</b>								
Reserve - Asset Replacement	10,000	10,000						
	10,000	10,000						
<b>Funding Total</b>	<b>10,000</b>	<b>10,000</b>						

# TOWNSHIP OF RUSSELL

## Capital Projects

<b>Project</b>	C0135-19092 Historical Site Plaques		
<b>Department</b>	Communications		
<b>Version</b>	Approved Budget	<b>Year</b>	2022

### Description

## Project Description

**Project Summary:** Addition of 4 historical sites per year throughout the township until 2023

**Study:** N/A

**Level of Service Impact:** N/A

**Annual Requirement Impact:** Approx \$422/yr

**Sommaire du projet:** Ajout de 4 plaques historiques par année dans la municipalité jusqu'à la fin 2023

**Étude:** S/O

**Impact sur le niveau de service :** S/O

**Impact sur le besoin annuel :** Approx \$22\$/année

### Budget

	Total	2022	2023	2024	2025	2026	2027-2031	2028
<b>Expenditures</b>								
<b>Salaries</b>								
Salaries - FT	2,150	1,050	1,100					
	2,150	1,050	1,100					
<b>Material &amp; Supplies</b>								
Materials	19,500	9,500	10,000					
	19,500	9,500	10,000					
<b>Expenditures Total</b>	<b>21,650</b>	<b>10,550</b>	<b>11,100</b>					
<b>Funding</b>								
<b>Reserves</b>								
Reserve - Asset Replacement	21,650	10,550	11,100					
	21,650	10,550	11,100					
<b>Funding Total</b>	<b>21,650</b>	<b>10,550</b>	<b>11,100</b>					

# TOWNSHIP OF RUSSELL

## Capital Projects

<b>Project</b>	C0135-19092 Historical Site Plaques		
<b>Department</b>	Communications		
<b>Version</b>	Approved Budget	Year	2022

### Gallery

S:\Department\Asset Management\Budget\2020\Project reports\Debbie IMG\_0037.png



# TOWNSHIP OF RUSSELL

## Capital Projects

<b>Project</b>	C0140-19093 Computer Fleet Replacement and Network		
<b>Department</b>	I.T.		
<b>Version</b>	Approved Budget	<b>Year</b>	2022

### Description

## Project Description

**Project Summary:** Annual replacement of approximately 12 to 15 computers/monitors  
**Study:** N/A  
**Level of Service Impact:** N/A  
**Annual Requirement Impact:** N/A

**Sommaire du Projet:** Remplacement annuel d'environ 12 à 15 ordinateurs/moniteurs  
**Étude:** S/O  
**Impact sur le niveau de service:** S/O  
**Impact sur le besoin annuel:** S/O

### Budget

	Total	2022	2023	2024	2025	2026	2027-2031	2028
<b>Expenditures</b>								
<b>Material &amp; Supplies</b>								
Materials	71,400	41,400	30,000					
	71,400	41,400	30,000					
<b>Expenditures Total</b>	<b>71,400</b>	<b>41,400</b>	<b>30,000</b>					
<b>Funding</b>								
<b>Reserves</b>								
Reserve - Asset Replacement	61,100	31,100	30,000					
Reserve - Building Asset Replacement	10,300	10,300						
	71,400	41,400	30,000					
<b>Funding Total</b>	<b>71,400</b>	<b>41,400</b>	<b>30,000</b>					

# TOWNSHIP OF RUSSELL

## Capital Projects

<b>Project</b>	C0140-22070 Toughbooks		
<b>Department</b>	I.T.		
<b>Version</b>	Approved Budget	<b>Year</b>	2022

### Description

## Project Description

**Project Summary:** Chang

tablets
---------

Toughbooks  
**Study:** N/A  
**Level of Service Impact:** N/A  
**Annual Requirement Impact:** \$1,600

**Sommaire du projet:** Changer

lestablettes
--------------

Toughbooks  
**Étude:** S/O  
**Impact sur le niveau de service :** S/O  
**Impact sur le besoin annuel :** 1600\$

### Budget

	Total	2022	2023	2024	2025	2026	2027-2031	2028
<b>Expenditures</b>								
<b>Material &amp; Supplies</b>								
Materials	16,000	16,000						
	16,000	16,000						
<b>Expenditures Total</b>	<b>16,000</b>	<b>16,000</b>						
<b>Funding</b>								
<b>Reserves</b>								
Reserve - Asset Replacement	16,000	16,000						
	16,000	16,000						
<b>Funding Total</b>	<b>16,000</b>	<b>16,000</b>						

# TOWNSHIP OF RUSSELL

## Capital Projects

<b>Project</b>	C0211-19095 Bunker Gear		
<b>Department</b>	Embrun Fire		
<b>Version</b>	Approved Budget	<b>Year</b>	2022

### Description

## Project Description

**Project Summary:** Replacement of 1 bunker gears ( 10 year rotation)

**Study:** N/A

**Level of Service Impact:** N/A

**Annual Requirement Impact:** N/A

**Sommaire du projet:** Remplacement de un habits de combat (rotation 10 ans)

**Étude:** S/O

**Impact sur le niveau de service :** S/O

**Impact sur le besoin annuel :** S/O

### Budget

	Total	2022	2023	2024	2025	2026	2027-2031	2028
<b>Expenditures</b>								
<b>Material &amp; Supplies</b>								
Materials	52,974	2,543	2,649	7,946	13,774	17,163	8,899	
	52,974	2,543	2,649	7,946	13,774	17,163	8,899	
<b>Expenditures Total</b>	<b>52,974</b>	<b>2,543</b>	<b>2,649</b>	<b>7,946</b>	<b>13,774</b>	<b>17,163</b>	<b>8,899</b>	
<b>Funding</b>								
<b>Reserves</b>								
Reserve - Asset Replacement	52,974	2,543	2,649	7,946	13,774	17,163	8,899	
	52,974	2,543	2,649	7,946	13,774	17,163	8,899	
<b>Funding Total</b>	<b>52,974</b>	<b>2,543</b>	<b>2,649</b>	<b>7,946</b>	<b>13,774</b>	<b>17,163</b>	<b>8,899</b>	



# TOWNSHIP OF RUSSELL

## Capital Projects

<b>Project</b>	C0211-22014 Replacement of 2000 GMC Tanker (T101)		
<b>Department</b>	Embrun Fire		
<b>Version</b>	Approved Budget	<b>Year</b>	2022

### Description

## Project Description

**Project Summary:** Replacement of 2000 GMC Tanker (T101)

**Study:** Fire Dept Fleet Replacement Forecast

**Level of Service Impact:** Maintain

**Annual Requirement Impact:** N/A

**Sommaire du projet:** Remplacement du Camion GMC 2000 (T101)

**Étude:** Prévission de remplacement de la flotte du service d'incendie

**Impact sur le niveau de service :** Maintenir

**Impact sur le besoin annuel :** S/O

### Budget

	Total	2022	2023	2024	2025	2026	2027-2031	2028
<b>Expenditures</b>								
<b>Material &amp; Supplies</b>								
Materials	425,000	425,000						
	425,000	425,000						
<b>Expenditures Total</b>	<b>425,000</b>	<b>425,000</b>						
<b>Funding</b>								
<b>Reserves</b>								
Reserve - Asset Replacement	229,748	229,748						
Reserve - Specific Project (General)	135,252	135,252						
	365,000	365,000						
<b>User fees, Donation / Sales</b>								
Sale of Asset	60,000	60,000						
	60,000	60,000						
<b>Funding Total</b>	<b>425,000</b>	<b>425,000</b>						

# TOWNSHIP OF RUSSELL

## Capital Projects

<b>Project</b>	C0212-22056 Helmet 10 year replacement		
<b>Department</b>	Russell Fire		
<b>Version</b>	Approved Budget	<b>Year</b>	2022

### Description

## Project Description

**Project Summary:** HelmetReplacement

**Study:** N/A

**Level of Service Impact:** N/A

**Annual Requirement Impact:** N/A

**Sommaire du projet:** Remplacementdecasques

**Étude:** S/O

**Impact sur le niveau de service :** S/O

**Impact sur le besoin annuel :** S/O

### Budget

	Total	2022	2023	2024	2025	2026	2027-2031	2028
<b>Expenditures</b>								
<b>Material &amp; Supplies</b>								
Materials - Equipment	12,087	12,087						
	12,087	12,087						
<b>Expenditures Total</b>	<b>12,087</b>	<b>12,087</b>						
<b>Funding</b>								
<b>Reserves</b>								
Reserve - Asset Replacement	12,087	12,087						
	12,087	12,087						
<b>Funding Total</b>	<b>12,087</b>	<b>12,087</b>						

# TOWNSHIP OF RUSSELL

## Capital Projects

<b>Project</b>	C0212-22059 Asphalt repair back parking lot		
<b>Department</b>	Russell Fire		
<b>Version</b>	Approved Budget	<b>Year</b>	2022

### Description

## Project Description

**Project Summary:** Asphalt repair at the back of the parking lot

**Study:** N/A

**Level of Service Impact:** N/A

**Annual Requirement Impact:** N/A

**Sommaire du projet:** Remplacement de l'asphalte à l'arrière du stationnement

**Étude:** S/O

**Impact sur le niveau de service :** S/O

**Impact sur le besoin annuel :** S/O

### Budget

	Total	2022	2023	2024	2025	2026	2027-2031	2028
<b>Expenditures</b>								
<b>Other contracted</b>								
Service & Repairs - Equipment	5,596	5,596						
	5,596	5,596						
<b>Expenditures Total</b>	<b>5,596</b>	<b>5,596</b>						
<b>Funding</b>								
<b>Reserves</b>								
Reserve - Asset Replacement	5,596	5,596						
	5,596	5,596						
<b>Funding Total</b>	<b>5,596</b>	<b>5,596</b>						

# TOWNSHIP OF RUSSELL

## Capital Projects

<b>Project</b>	C0230-22082 South Nation Shoreline Restauration		
<b>Department</b>	Conservation Authority		
<b>Version</b>	Approved Budget	<b>Year</b>	2022

### Description

## Project Description

**Project Summary:** Shoreline restoration of East York Creek  
**Study:** N/A  
**Level of Service Impact:** N/A  
**Annual Requirement Impact:** N/A

**Sommaire du projet:** Restauration du rivage du ruisseau East York  
**Étude:** S/O  
**Impact sur le niveau de service:** S/O  
**Impact sur le besoin annuel:** S/O

### Budget

	Total	2022	2023	2024	2025	2026	2027-2031	2028
<b>Expenditures</b>								
<b>Material &amp; Supplies</b>								
Materials	70,000	70,000						
	70,000	70,000						
<b>Expenditures Total</b>	<b>70,000</b>	<b>70,000</b>						
<b>Funding</b>								
<b>Reserves</b>								
Reserve - Asset Replacement	70,000	70,000						
	70,000	70,000						
<b>Funding Total</b>	<b>70,000</b>	<b>70,000</b>						

# TOWNSHIP OF RUSSELL

## Capital Projects

<b>Project</b>	C0240-19054 securite corporative		
<b>Department</b>	By-law Enforcement		
<b>Version</b>	Approved Budget	<b>Year</b>	2022

### Description

## Project Description

**Project Summary:** Cameras for recreational facilities  
**Study:**  
**Level of Service Impact:**  
**Annual Requirement Impact:** \$2,161

**Sommaire du projet:** Caméras pour les établissements récréatifs  
**Étude:**  
**Impact sur le niveau de service :**  
**Impact sur le besoin annuel :** 2161\$

### Budget

	Total	2022	2023	2024	2025	2026	2027-2031	2028
<b>Expenditures</b>								
<b>Construction</b>								
Construction	32,419	32,419						
	32,419	32,419						
<b>Expenditures Total</b>	<b>32,419</b>	<b>32,419</b>						
<b>Funding</b>								
<b>Reserves</b>								
Reserve - Asset Replacement	32,419	32,419						
	32,419	32,419						
<b>Funding Total</b>	<b>32,419</b>	<b>32,419</b>						

# TOWNSHIP OF RUSSELL

## Capital Projects

<b>Project</b>	C0240-22069 Message Board		
<b>Department</b>	By-law Enforcement		
<b>Version</b>	Approved Budget	<b>Year</b>	2022

### Description

## Project Description

**Project Summary:** Trailer with radar sign & computer  
**Study:**  
**Level of Service Impact:**  
**Annual Requirement Impact:** \$1,333

**Sommaire du projet:** Remorque avec panneau radar & ordinateur  
**Étude:**  
**Impact sur le niveau de service :**  
**Impact sur le besoin annuel :** 1333\$

### Budget

	Total	2022	2023	2024	2025	2026	2027-2031	2028
<b>Expenditures</b>								
<b>Material &amp; Supplies</b>								
Materials	20,000	20,000						
	20,000	20,000						
<b>Expenditures Total</b>	<b>20,000</b>	<b>20,000</b>						
<b>Funding</b>								
<b>Reserves</b>								
Reserve - Asset Replacement	4,707	4,707						
	4,707	4,707						
<b>Development Charge</b>								
DC By-law Enforcement	15,293	15,293						
	15,293	15,293						
<b>Funding Total</b>	<b>20,000</b>	<b>20,000</b>						

# TOWNSHIP OF RUSSELL

## Capital Projects

<b>Project</b>	C0301-22018 Salt box spreader		
<b>Department</b>	Roads Dept (Equipment)		
<b>Version</b>	Approved Budget	<b>Year</b>	2022

### Description

## Project Description

**Project Summary:** Purchase a salt box to spread salt in parking lots  
**Study:** N/A  
**Level of Service Impact:** increase level of service of snow removal within township's parking lots  
**Annual Requirement Impact:** small increase

**Sommaire du projet:** L'achat d'un bac de sel pour épandre du sel dans les stationnements  
**Étude:** N/A  
**Impact sur le niveau de service :** Augmenter le niveau de service du déneigement dans les stationnements de la municipalité  
**Impact sur le besoin annuel :** Petite augmentation

### Budget

	Total	2022	2023	2024	2025	2026	2027-2031	2028
<b>Expenditures</b>								
<b>Material &amp; Supplies</b>								
Materials - Equipment	15,000	15,000						
	15,000	15,000						
<b>Expenditures Total</b>	<b>15,000</b>	<b>15,000</b>						
<b>Funding</b>								
<b>Reserves</b>								
Reserve - Specific Project (General)	15,000	15,000						
	15,000	15,000						
<b>Funding Total</b>	<b>15,000</b>	<b>15,000</b>						

# TOWNSHIP OF RUSSELL

## Capital Projects

<b>Project</b>	C0301-22021 Front end Loader (extra snow removal equipment)		
<b>Department</b>	Roads Dept (Equipment)		
<b>Version</b>	Approved Budget	<b>Year</b>	2022

### Description

## Project Description

**Project Summary:** Purchase a front end loader instead of a long term lease. This units will be part of the snow removal crew

**Study:** current DC study

**Level of Service Impact:** to maintain the current level of service because of the growth.

**Annual Requirement Impact:** the annual requirement will increase by about \$20,000

**Sommaire du projet:** L'achat d'un chargeur frontal au lieu d'un bail à long terme. Cette unité fera partie de l'équipe de déneigement

**Étude:** étude des frais de développement

**Impact sur le niveau de service :** Maintenir le niveau de service, en raison de la croissance actuel

**Impact sur le besoin annuel :** Le besoin annuel augmentera d'environ 20000\$

### Budget

	Total	2022	2023	2024	2025	2026	2027-2031	2028
<b>Expenditures</b>								
<b>Material &amp; Supplies</b>								
Materials - Equipment	300,000	300,000						
	300,000	300,000						
<b>Expenditures Total</b>	<b>300,000</b>	<b>300,000</b>						
<b>Funding</b>								
<b>Development Charge</b>								
DC Roads	300,000	300,000						
	300,000	300,000						
<b>Funding Total</b>	<b>300,000</b>	<b>300,000</b>						



# TOWNSHIP OF RUSSELL

## Capital Projects

<b>Project</b>	C0301-22074 Snow Dump Facility		
<b>Department</b>	Roads Dept (Equipment)		
<b>Version</b>	Approved Budget	<b>Year</b>	2022

### Description

## Project Description

**Project Summary:** Snow Dump detailed design is currently on-going, once completed the project will be tender ready.

**Study:**

**Level of Service Impact:** Strategic Plan - Renew and Expand Infrastructure

**Annual Requirement Impact:** \$54,000

**Sommaire du projet:** le dépôt à neige est en conception. une fois terminée le projet sera prêt pour l'appel d'offre

**Étude:**

**Impact sur le niveau de service:** Plan stratégique - Renouveler et agrandir l'infrastructure

**Impact sur le besoin annuel:** 54000\$

### Budget

	Total	2022	2023	2024	2025	2026	2027-2031	2028
<b>Expenditures</b>								
<b>Construction</b>								
Construction	1,800,000	1,800,000						
	1,800,000	1,800,000						
<b>Expenditures Total</b>	<b>1,800,000</b>	<b>1,800,000</b>						
<b>Funding</b>								
<b>Development Charge</b>								
DC Roads	423,606	423,606						
	423,606	423,606						
<b>Loan</b>								
Loan - Capital Project (no 1)	1,376,394	1,376,394						
	1,376,394	1,376,394						
<b>Funding Total</b>	<b>1,800,000</b>	<b>1,800,000</b>						

# TOWNSHIP OF RUSSELL

## Capital Projects

<b>Project</b>	C0340-20088 Roundabout St-Pierre St-Guillaume		
<b>Department</b>	Roads Systems projects		
<b>Version</b>	Approved Budget	<b>Year</b>	2022

### Description

## Project Description

**Project Summary:** Construction of a roundabout  
**Study:** Transportation Masterplan  
**Level of Service Impact:** increase level of service  
**Annual Requirement Impact:** N/A - UCPR asset

**Sommaire du projet:** construction d'un carrefour giratoire  
**Étude:** Plan directeur de transport  
**Impact sur le niveau de service :** augmenter le niveau de service  
**Impact sur le besoin annuel :** S.O. avoir des CUPR

### Budget

	Total	2022	2023	2024	2025	2026	2027-2031	2028
<b>Expenditures</b>								
<b>Construction</b>								
Construction	615,735	615,735						
	615,735	615,735						
<b>Expenditures Total</b>	<b>615,735</b>	<b>615,735</b>						
<b>Funding</b>								
<b>Development Charge</b>								
DC Roads	461,800	461,800						
	461,800	461,800						
<b>Other Municipalities</b>								
Other Municipalities	153,935	153,935						
	153,935	153,935						
<b>Funding Total</b>	<b>615,735</b>	<b>615,735</b>						

# TOWNSHIP OF RUSSELL

## Capital Projects

<b>Project</b>	C0340-22000 2022 Road Paving (All Jobs)		
<b>Department</b>	Roads Systems projects		
<b>Version</b>	Approved Budget	<b>Year</b>	2022

### Description

## Project Description

**Project Summary:** All Paving jobs  
**Study:** Road need study  
**Level of Service Impact:** maintain the level of service  
**Annual Requirement Impact:** maintain

**Sommaire du projet:** Tous les travaux de pavage  
**Étude:** Chemin, besoin d'évaluation  
**Impact sur le niveau de service :** Maintenir le niveau de service  
**Impact sur le besoin annuel :** Maintenir

### Budget

	Total	2022	2023	2024	2025	2026	2027-2031	2028
<b>Expenditures</b>								
<b>Other contracted</b>								
Contracted	1,819,630	1,569,630	250,000					
	1,819,630	1,569,630	250,000					
<b>Expenditures Total</b>	<b>1,819,630</b>	<b>1,569,630</b>	<b>250,000</b>					
<b>Funding</b>								
<b>Reserves</b>								
Reserve - Asset Replacement	495,519	495,519						
	495,519	495,519						
<b>Development Charge</b>								
DC Roads	312,250	312,250						
	312,250	312,250						
<b>Grants - Federal Gas Tax</b>								
Federal Gas Tax	373,934	373,934						
	373,934	373,934						
<b>Other Municipalities</b>								
Other Municipalities	387,927	387,927						
	387,927	387,927						
<b>Unfinanced</b>								
Unfinanced at YE	250,000		250,000					
	250,000		250,000					
<b>Funding Total</b>	<b>1,819,630</b>	<b>1,569,630</b>	<b>250,000</b>					

# TOWNSHIP OF RUSSELL

## Capital Projects

<b>Project</b>	C0340-22001 Paving Route 300 - St-Augustin to St-Thomas		
<b>Department</b>	Roads Systems projects		
<b>Version</b>	Approved Budget	<b>Year</b>	2022

### Description

## Project Description

**Project Summary:** Overlay - add a second lift of asphalt  
**Study:** Road need study  
**Level of Service Impact:** maintain the level of service  
**Annual Requirement Impact:** maintain

**Sommaire du projet:** Recouvrir - ajouter une deuxième couche d'asphalte  
**Étude:** Chemin, besoin d'évaluation  
**Impact sur le niveau de service :** Maintenir le niveau de service  
**Impact sur le besoin annuel :** Maintenir

### Budget

Total	2022	2023	2024	2025	2026	2027-2031	2028
-------	------	------	------	------	------	-----------	------

# TOWNSHIP OF RUSSELL

## Capital Projects

<b>Project</b>	C0340-22002 Paving Route 300 - St-Pierre to St-Augustin		
<b>Department</b>	Roads Systems projects		
<b>Version</b>	Approved Budget	<b>Year</b>	2022

### Description

## Project Description

**Project Summary:** Overlay - add a second lift of asphalt  
**Study:** Road need study  
**Level of Service Impact:** maintain the level of service  
**Annual Requirement Impact:** maintain

**Sommaire du projet:** Recouvrir - ajouter une deuxième couche d'asphalte  
**Étude:** Chemin, besoin d'évaluation  
**Impact sur le niveau de service :** Maintenir le niveau de service  
**Impact sur le besoin annuel :** Maintenir

### Budget

Total	2022	2023	2024	2025	2026	2027-2031	2028
-------	------	------	------	------	------	-----------	------

# TOWNSHIP OF RUSSELL

## Capital Projects

<b>Project</b>	C0340-22003 Paving Hamilton Rd - Craig to route 200		
<b>Department</b>	Roads Systems projects		
<b>Version</b>	Approved Budget	<b>Year</b>	2022

### Description

## Project Description

**Project Summary:** Paving 2 lift of asphalt and creating a wide pave shoulder

**Study:** Council request

**Level of Service Impact:** increase level of service

**Annual Requirement Impact:** small increase

**Sommaire du projet:** pavé deux couches et créer un large accotement pavé

**Étude:** demandé du conseil

**Impact sur le niveau de service :** Augmenter le niveau de service

**Impact sur le besoin annuel :** légère augmentation

### Budget

Total	2022	2023	2024	2025	2026	2027-2031	2028
-------	------	------	------	------	------	-----------	------

# TOWNSHIP OF RUSSELL

## Capital Projects

<b>Project</b>	C0340-22004 Paving Route 200 - St-Guillaume to unopen ROW		
<b>Department</b>	Roads Systems projects		
<b>Version</b>	Approved Budget	<b>Year</b>	2022

### Description

## Project Description

**Project Summary:** Replace a major culvert in 2022 and pave in 2023

**Study:** Road need study, and the culvert as per Municipal drain report

**Level of Service Impact:** maintain the level of service

**Annual Requirement Impact:** maintain

**Sommaire du projet:** Remplacé un ponceau majeure en 2022 et pavé en 2023

**Étude:** Chemin, besoin d'évaluation et le rapport du drain municipal

**Impact sur le niveau de service :** Maintenir le niveau de service

**Impact sur le besoin annuel :** Maintenir

### Budget

Total	2022	2023	2024	2025	2026	2027-2031	2028
-------	------	------	------	------	------	-----------	------

# TOWNSHIP OF RUSSELL

## Capital Projects

<b>Project</b>	C0340-22005 Paving St-Thomas - Notre-Dame to route 300		
<b>Department</b>	Roads Systems projects		
<b>Version</b>	Approved Budget	<b>Year</b>	2022

### Description

## Project Description

**Project Summary:** Overlay on St-Thomas Rd from Notre-Dame to Route 300  
**Study:** Roadneedstudy  
**Level of Service Impact:** maintain the level of service  
**Annual Requirement Impact:** maintain

**Sommaire du projet:** Recouvrir le chemin St-Thomas de Notre-Dame à la Route 300  
**Étude:** Le chemin à besoin d'évaluation  
**Impact sur le niveau de service :** Maintenir le niveau de service  
**Impact sur le besoin annuel :** Maintenir

### Budget

Total	2022	2023	2024	2025	2026	2027-2031	2028
-------	------	------	------	------	------	-----------	------



# TOWNSHIP OF RUSSELL

## Capital Projects

<b>Project</b>	C0340-22006 Paving Route 400 from St-André to Ste-Catherine		
<b>Department</b>	Roads Systems projects		
<b>Version</b>	Approved Budget	<b>Year</b>	2022

### Description

## Project Description

**Project Summary:** Overlay - add a second lift of asphalt

**Study:** Road need study

**Level of Service Impact:** maintain the level of service

**Annual Requirement Impact:** maintain

**Sommaire du projet:** Recouvrir - ajouter une deuxième couche d'asphalt

**Étude:** Chemin, besoin d'évaluation

**Impact sur le niveau de service :** Maintenir le niveau de service

**Impact sur le besoin annuel :** Maintenir

### Budget

Total	2022	2023	2024	2025	2026	2027-2031	2028
-------	------	------	------	------	------	-----------	------

# TOWNSHIP OF RUSSELL

## Capital Projects

<b>Project</b>	C0340-22007 Paving Route 400 from St-Albert to unopen Row		
<b>Department</b>	Roads Systems projects		
<b>Version</b>	Approved Budget	<b>Year</b>	2022

### Description

## Project Description

**Project Summary:** Overlay - add a second lift of asphalt

**Study:** Road need study

**Level of Service Impact:** maintain the level of service

**Annual Requirement Impact:** maintain

**Sommaire du projet:** Recouvrir - ajouter une deuxième couche d'asphalt

**Étude:** Chemin, besoin d'évaluation

**Impact sur le niveau de service :** Maintenir le niveau de service

**Impact sur le besoin annuel :** Maintenir

### Budget

Total	2022	2023	2024	2025	2026	2027-2031	2028
-------	------	------	------	------	------	-----------	------

# TOWNSHIP OF RUSSELL

## Capital Projects

<b>Project</b>	C0340-22008 Paving St-André Rd (Stream #2)		
<b>Department</b>	Roads Systems projects		
<b>Version</b>	Approved Budget	<b>Year</b>	2022

### Description

## Project Description

**Project Summary:** Paving of St-André Rd from Route 400 to Marionville Rd

**Study:** Road need Study - roads not included in the paving plan

**Level of Service Impact:** Increase

**Annual Requirement Impact:** increase

**Sommaire du projet:** Pavage du chemin St-André de la Route 400 au chemin Marionville

**Étude:** étude du besoin des chemins

**Impact sur le niveau de service:** augmentation

**Impact sur le besoin annuel:** augmentation

### Budget

	Total	2022	2023	2024	2025	2026	2027-2031	2028
<b>Expenditures</b>								
<b>Other contracted</b>								
Contracted	857,150	857,150						
	857,150	857,150						
<b>Expenditures Total</b>	<b>857,150</b>	<b>857,150</b>						
<b>Funding</b>								
<b>Reserves</b>								
Reserve - Asset Replacement	242,799	242,799						
Reserve - Loan projects	614,351	614,351						
	857,150	857,150						
<b>Funding Total</b>	<b>857,150</b>	<b>857,150</b>						

# TOWNSHIP OF RUSSELL

## Capital Projects

<b>Project</b>	C0340-22022 Roundabout Route 300 / Limoges Rd		
<b>Department</b>	Roads Systems projects		
<b>Version</b>	Approved Budget	<b>Year</b>	2022

### Description

## Project Description

**Project Summary:** Construction of Roundabout to improve the intersection. In 2022, construction pre-planning; construction is planned for 2023.

**Study:** Community traffic study (2018) and design completed (2021)

**Level of Service Impact:** increase the level of service and safety of the intersection

**Annual Requirement Impact:** N/A, intersection on County Road

**Sommaire du projet:** Construction d'un rond-point à l'intersection. En 2022, seulement pré-planification de construction et la construction est planifiée pour 2023.

**Étude:** Étude de circulation communautaire (2018) et conception complétée (2021)

**Impact sur le niveau de service :** Augmenter le niveau de service et la sécurité de l'intersection

**Impact sur le besoin annuel :** N/A, l'intersection est située sur un chemin des Comtés

### Budget

	Total	2022	2023	2024	2025	2026	2027-2031	2028
<b>Expenditures</b>								
<b>Professional fees</b>								
Legal	200,000	200,000						
	200,000	200,000						
<b>Construction</b>								
Construction	1,800,000		1,800,000					
	1,800,000		1,800,000					
<b>Expenditures Total</b>	<b>2,000,000</b>	<b>200,000</b>	<b>1,800,000</b>					
<b>Funding</b>								
<b>Development Charge</b>								
DC Roads	67,000	67,000						
	67,000	67,000						
<b>Other Municipalities</b>								
Other Municipalities	133,000	133,000						
	133,000	133,000						
<b>Unfinanced</b>								
Unfinanced at YE	1,800,000		1,800,000					
	1,800,000		1,800,000					
<b>Funding Total</b>	<b>2,000,000</b>	<b>200,000</b>	<b>1,800,000</b>					

# TOWNSHIP OF RUSSELL

## Capital Projects

<b>Project</b>	C0340-22023 roundabout Route 300 / St-Guillaume Rd		
<b>Department</b>	Roads Systems projects		
<b>Version</b>	Approved Budget	<b>Year</b>	2022

### Description

## Project Description

**Project Summary:** Construction of Roundabout to improve the intersection. In 2022, construction pre-planning; construction is planned for 2023.

**Study:** Community traffic study (2018) and design completed (2021)

**Level of Service Impact:** increase the level of service and safety of the intersection

**Annual Requirement Impact:** N/A, intersection on County road

**Sommaire du projet:** Construction d'un rond-point pour améliorer l'intersection. En 2022, pré-planification de construction et la construction est planifiée pour 2023.

**Étude:** Étude de circulation communautaire (2018) et conception complétée (2021)

**Impact sur le niveau de service :** Augmenter le niveau de service et la sécurité de l'intersection

**Impact sur le besoin annuel :** N/A, Intersection est située sur un chemin des Comtés

### Budget

	Total	2022	2023	2024	2025	2026	2027-2031	2028
<b>Expenditures</b>								
<b>Professional fees</b>								
Legal	200,000	200,000						
	200,000	200,000						
<b>Construction</b>								
Construction	1,800,000		1,800,000					
	1,800,000		1,800,000					
<b>Expenditures Total</b>	<b>2,000,000</b>	<b>200,000</b>	<b>1,800,000</b>					
<b>Funding</b>								
<b>Development Charge</b>								
DC Roads	67,000	67,000						
	67,000	67,000						
<b>Other Municipalities</b>								
Other Municipalities	133,000	133,000						
	133,000	133,000						
<b>Unfinanced</b>								
Unfinanced at YE	1,800,000		1,800,000					
	1,800,000		1,800,000					
<b>Funding Total</b>	<b>2,000,000</b>	<b>200,000</b>	<b>1,800,000</b>					

# TOWNSHIP OF RUSSELL

## Capital Projects

<b>Project</b>	C0340-22024 Roundabout St-Guillaume / commercial development		
<b>Department</b>	Roads Systems projects		
<b>Version</b>	Approved Budget	<b>Year</b>	2022

### Description

## Project Description

**Project Summary:** Construction of a roundabout to service a future commercial land

**Study:** Traffic study

**Level of Service Impact:** Increase level of service from streetlights

**Annual Requirement Impact:** N/A, intersection on County road

**Sommaire du projet:** Construction d'un rond-point pour desservir un futur terrain commercial

**Étude:** Étude de circulation

**Impact sur le niveau de service :** Augmenter le niveau de service des lumières de rue

**Impact sur le besoin annuel :** N/A, intersection est située sur un chemin des Comtés.

### Budget

	Total	2022	2023	2024	2025	2026	2027-2031	2028
<b>Expenditures</b>								
<b>Construction</b>								
Construction	330,000	330,000						
	330,000	330,000						
<b>Expenditures Total</b>	<b>330,000</b>	<b>330,000</b>						
<b>Funding</b>								
<b>Development Charge</b>								
DC Roads	330,000	330,000						
	330,000	330,000						
<b>Funding Total</b>	<b>330,000</b>	<b>330,000</b>						

# TOWNSHIP OF RUSSELL

## Capital Projects

<b>Project</b>	C0341-22075 Route 400 Bridge (R-022)		
<b>Department</b>	Roads Bridges & Culverts		
<b>Version</b>	Approved Budget	<b>Year</b>	2022

### Description

## Project Description

**Project Summary:** Rehabilitation of the bridge on Route 400 east of Eadie Rd  
**Study:** OSIM2019  
**Level of Service Impact:** Maintain  
**Annual Requirement Impact:** Maintain

**Sommaire du projet:** Réhabilitation du pont de la Route 400 à l'est du chemin Eadie  
**Étude:** OSIM2019  
**Impact sur le niveau de service :** Maintenir  
**Impact sur le besoin annuel :** Maintenir

### Budget

	Total	2022	2023	2024	2025	2026	2027-2031	2028
<b>Expenditures</b>								
<b>Other contracted</b>								
Contracted	1,500,000	1,500,000						
	1,500,000	1,500,000						
<b>Expenditures Total</b>	<b>1,500,000</b>	<b>1,500,000</b>						
<b>Funding</b>								
<b>Reserves</b>								
Reserve - Asset Replacement	866,483	866,483						
	866,483	866,483						
<b>Grants - Provincial OCIF</b>								
OCIF Grant	633,517	633,517						
	633,517	633,517						
<b>Funding Total</b>	<b>1,500,000</b>	<b>1,500,000</b>						

# TOWNSHIP OF RUSSELL

## Capital Projects

<b>Project</b>	C0341-22078 St-André Rd Bridge (R-008)		
<b>Department</b>	Roads Bridges & Culverts		
<b>Version</b>	Approved Budget	<b>Year</b>	2022

### Description

## Project Description

**Project Summary:** Rehabilitation of the bridge on St-André Rd south of Notre-Dame

**Study:** OSIM2019

**Level of Service Impact:** Maintain

**Annual Requirement Impact:** Maintain

**Sommaire du projet:** Réhabilitation du pont du Chemin St-André sude de Notre-Dame

**Étude:** OSIM2019

**Impact sur le niveau de service :** Maintenir

**Impact sur le besoin annuel :** Maintenir

### Budget

	Total	2022	2023	2024	2025	2026	2027-2031	2028
<b>Expenditures</b>								
<b>Professional fees</b>								
Engineering	40,000	40,000						
	40,000	40,000						
<b>Construction</b>								
Construction	600,000		600,000					
	600,000		600,000					
<b>Expenditures Total</b>	<b>640,000</b>	<b>40,000</b>	<b>600,000</b>					
<b>Funding</b>								
<b>Reserves</b>								
Reserve - Asset Replacement	40,000	40,000						
	40,000	40,000						
<b>Funding Total</b>	<b>40,000</b>	<b>40,000</b>						



# TOWNSHIP OF RUSSELL

## Capital Projects

<b>Project</b>	C0342-22076 Sidewalk Replacement		
<b>Department</b>	Roads Sidewalks		
<b>Version</b>	Approved Budget	<b>Year</b>	2022

### Description

## Project Description

**Project Summary:** SidewalkReplacement  
**Study:** AssetManagement  
**Level of Service Impact:** Maintain  
**Annual Requirement Impact:** Maintain  
  
**Sommaire du projet:** RemplacementdeTrottoirs  
**Étude:** Gestion d'immobilisations  
**Impact sur le niveau de service :** Maintenir  
**Impact sur le besoin annuel :** Maintenir

### Budget

	Total	2022	2023	2024	2025	2026	2027-2031	2028
<b>Expenditures</b>								
<b>Other contracted</b>								
Contracted	100,000	100,000						
	100,000	100,000						
<b>Expenditures Total</b>	<b>100,000</b>	<b>100,000</b>						
<b>Funding</b>								
<b>Reserves</b>								
Reserve - Asset Replacement	100,000	100,000						
	100,000	100,000						
<b>Funding Total</b>	<b>100,000</b>	<b>100,000</b>						

# TOWNSHIP OF RUSSELL

## Capital Projects

<b>Project</b>	C0342-22077 Aecessibility Improvements (Pathway & Sidewalk)		
<b>Department</b>	Roads Sidewalks		
<b>Version</b>	Approved Budget	<b>Year</b>	2022

### Description

## Project Description

**Project Summary:** Replacement of access to pathway and sidewalk intersections

**Study:** Asset Management

**Level of Service Impact:** Increase

**Annual Requirement Impact:** Increase

**Sommaire du projet:** remplacement des accès aux sentiers et intersections de trottoirs

**Étude:** Gestion d'immobilisations

**Impact sur le niveau de service :** Augmentation

**Impact sur le besoin annuel :** Augmentation

### Budget

	Total	2022	2023	2024	2025	2026	2027-2031	2028
<b>Expenditures</b>								
<b>Other contracted</b>								
Contracted	25,000	25,000						
	25,000	25,000						
<b>Expenditures Total</b>	<b>25,000</b>	<b>25,000</b>						
<b>Funding</b>								
<b>Tax levies / User fees</b>								
Tax Levy	25,000	25,000						
	25,000	25,000						
<b>Funding Total</b>	<b>25,000</b>	<b>25,000</b>						

# TOWNSHIP OF RUSSELL

## Capital Projects

<b>Project</b>	C0342-22083 Sidewalk - Nature Trail to Hybrid		
<b>Department</b>	Roads Sidewalks		
<b>Version</b>	Approved Budget	<b>Year</b>	2022

### Description

## Project Description

**Project Summary:** construction of a new sidewalk on St-Pierre Rd  
**Study:** N/A  
**Level of Service Impact:** increase  
**Annual Requirement Impact:** increase

**Sommaire du projet:** Construction d'un nouveau trottoir sur le chemin St-Pierre  
**Étude:** S.O.  
**Impact sur le niveau de service:** augmentation  
**Impact sur le besoin annuel:** augmentation

### Budget

	Total	2022	2023	2024	2025	2026	2027-2031	2028
<b>Expenditures</b>								
<b>Material &amp; Supplies</b>								
Materials	20,000	20,000						
	20,000	20,000						
<b>Expenditures Total</b>	<b>20,000</b>	<b>20,000</b>						
<b>Funding</b>								
<b>Reserves</b>								
Reserve - Asset Replacement	20,000	20,000						
	20,000	20,000						
<b>Funding Total</b>	<b>20,000</b>	<b>20,000</b>						

# TOWNSHIP OF RUSSELL

## Capital Projects

<b>Project</b>	C0411-20040 Russell Lagoon Sludge removal		
<b>Department</b>	Sanitary Sewage System		
<b>Version</b>	Approved Budget	<b>Year</b>	2022

### Description

## Project Description

**Project Summary:** Complet de sludge removal to a off site

**Study:** Assetmanagement

**Level of Service Impact:** maintain

**Annual Requirement Impact:** maintain

**Sommaire du projet:** completer le déplacement des boues à un site externe

**Étude:** gestion des avoirs

**Impact sur le niveau de service:** maintenir

**Impact sur le besoin annuel:** maintenir

### Budget

	Total	2022	2023	2024	2025	2026	2027-2031	2028
<b>Expenditures</b>								
<b>Other contracted</b>								
Contracted	100,000	100,000						
	100,000	100,000						
<b>Expenditures Total</b>	<b>100,000</b>	<b>100,000</b>						
<b>Funding</b>								
<b>Reserves</b>								
Res Fund - Sewer Asset Replacement	20,000	20,000						
	20,000	20,000						
<b>Development Charge</b>								
DC Sewer	80,000	80,000						
	80,000	80,000						
<b>Funding Total</b>	<b>100,000</b>	<b>100,000</b>						

# TOWNSHIP OF RUSSELL

## Capital Projects

<b>Project</b>	C0411-21039 Sewer installation - Alain and Sophie St		
<b>Department</b>	Sanitary Sewage System		
<b>Version</b>	Approved Budget	<b>Year</b>	2022

### Description

## Project Description

**Project Summary:** Construction of sanitary sewer if supported by home owner  
**Study:** N/A  
**Level of Service Impact:** increase  
**Annual Requirement Impact:** to be determined after construction

**Sommaire du projet:** construction des égouts sanitaires si supporté par les propriétaires  
**Étude:** S.O.  
**Impact sur le niveau de service:** Augmenter  
**Impact sur le besoin annuel:** À déterminer après construction

### Budget

	Total	2022	2023	2024	2025	2026	2027-2031	2028
<b>Expenditures</b>								
<b>Other contracted</b>								
Contracted	916,770	916,770						
	916,770	916,770						
<b>Expenditures Total</b>	<b>916,770</b>	<b>916,770</b>						
<b>Funding</b>								
<b>Reserves</b>								
Res Fund - Sewer Asset Replacement	338,248	338,248						
	338,248	338,248						
<b>User fees, Donation / Sales</b>								
User Fees	578,522	578,522						
	578,522	578,522						
<b>Funding Total</b>	<b>916,770</b>	<b>916,770</b>						

# TOWNSHIP OF RUSSELL

## Capital Projects

<b>Project</b>	C0411-22012 Blower Replacement Embrun Lagoon		
<b>Department</b>	Sanitary Sewage System		
<b>Version</b>	Approved Budget	<b>Year</b>	2022

### Description

## Project Description

**Project Summary:** replace blowers for the aeration system  
**Study:** asset management  
**Level of Service Impact:** maintain  
**Annual Requirement Impact:** maintain

**Sommaire du projet:** remplacé les souffleurs du système d'aération  
**Étude:** gestion des avoirs  
**Impact sur le niveau de service:** maintenir  
**Impact sur le besoin annuel:** maintenir

### Budget

	Total	2022	2023	2024	2025	2026	2027-2031	2028
<b>Expenditures</b>								
<b>Other contracted</b>								
Contracted	50,000	50,000						
	50,000	50,000						
<b>Expenditures Total</b>	<b>50,000</b>	<b>50,000</b>						
<b>Funding</b>								
<b>Reserves</b>								
Res Fund - Sewer Asset Replacement	50,000	50,000						
	50,000	50,000						
<b>Funding Total</b>	<b>50,000</b>	<b>50,000</b>						

# TOWNSHIP OF RUSSELL

## Capital Projects

<b>Project</b>	C0411-22026 replacement 92-13		
<b>Department</b>	Sanitary Sewage System		
<b>Version</b>	Approved Budget	<b>Year</b>	2022

### Description

## Project Description

**Project Summary:** replace pick-up 92-13

**Study:** Fleet policy

**Level of Service Impact:** maintain

**Annual Requirement Impact:** no impact

**Sommaire du projet:** Remplacer le véhicule 92-13

**Étude:** Politique des véhicules

**Impact sur le niveau de service :** Maintenir

**Impact sur le besoin annuel :** Aucun impact

### Budget

	Total	2022	2023	2024	2025	2026	2027-2031	2028
<b>Expenditures</b>								
<b>Material &amp; Supplies</b>								
Materials	60,000	60,000						
	60,000	60,000						
<b>Expenditures Total</b>	<b>60,000</b>	<b>60,000</b>						
<b>Funding</b>								
<b>Reserves</b>								
Res Fund - Sewer Asset Replacement	57,000	57,000						
	57,000	57,000						
<b>User fees, Donation / Sales</b>								
Sale of Asset	3,000	3,000						
	3,000	3,000						
<b>Funding Total</b>	<b>60,000</b>	<b>60,000</b>						

# TOWNSHIP OF RUSSELL

## Capital Projects

<b>Project</b>	C0411-22027 replacement 97-11		
<b>Department</b>	Sanitary Sewage System		
<b>Version</b>	Approved Budget	<b>Year</b>	2022

### Description

## Project Description

**Project Summary:** replace pick-up 97-11 with an energy efficient vehicle  
**Study:** fleet policy  
**Level of Service Impact:** maintain  
**Annual Requirement Impact:** no impact

**Sommaire du projet:** Remplacer le véhicule 97-11 avec un véhicule écoénergétique  
**Étude:** Politiques des véhicules  
**Impact sur le niveau de service :** Maintenir  
**Impact sur le besoin annuel :** Aucun impact

### Budget

	Total	2022	2023	2024	2025	2026	2027-2031	2028
<b>Expenditures</b>								
<b>Material &amp; Supplies</b>								
Materials	45,000	45,000						
	45,000	45,000						
<b>Expenditures Total</b>	<b>45,000</b>	<b>45,000</b>						
<b>Funding</b>								
<b>Reserves</b>								
Res Fund - Sewer Asset Replacement	45,000	45,000						
	45,000	45,000						
<b>Funding Total</b>	<b>45,000</b>	<b>45,000</b>						



# TOWNSHIP OF RUSSELL

## Capital Projects

<b>Project</b>	C0411-22028 modular trench box		
<b>Department</b>	Sanitary Sewage System		
<b>Version</b>	Approved Budget	<b>Year</b>	2022

### Description

## Project Description

**Project Summary:** Purchase a trench box to perform small excavation and increase safety

**Study:** N/A

**Level of Service Impact:** no impact

**Annual Requirement Impact:** \$1,000

**Sommaire du projet:** L'achat d'une boîte de tranchée pour effectuer des petites excavations et augmenter la sécurité

**Étude:** N/A

**Impact sur le niveau de service :** Aucun impact

**Impact sur le besoin annuel :** 1 000\$

### Budget

	Total	2022	2023	2024	2025	2026	2027-2031	2028
<b>Expenditures</b>								
<b>Material &amp; Supplies</b>								
Materials	10,000	10,000						
	10,000	10,000						
<b>Expenditures Total</b>	<b>10,000</b>	<b>10,000</b>						
<b>Funding</b>								
<b>Reserves</b>								
Res Fund - Sewer Asset Replacement	10,000	10,000						
	10,000	10,000						
<b>Funding Total</b>	<b>10,000</b>	<b>10,000</b>						

# TOWNSHIP OF RUSSELL

## Capital Projects

<b>Project</b>	C0411-22029 SCADA upgrade PS#5 embrun		
<b>Department</b>	Sanitary Sewage System		
<b>Version</b>	Approved Budget	<b>Year</b>	2022

### Description

## Project Description

**Project Summary:** replacement of the communication system of the pumping station #5 in embrun  
**Study:** Asset management  
**Level of Service Impact:** maintain current service level  
**Annual Requirement Impact:** maintain

**Sommaire du projet:** Remplacement du système de communication à la station de pompage #5 à Embrun  
**Étude:** Gestion des actifs  
**Impact sur le niveau de service :** Maintenir le service actuel  
**Impact sur le besoin annuel :** Maintenir

### Budget

	Total	2022	2023	2024	2025	2026	2027-2031	2028
<b>Expenditures</b>								
<b>Other contracted</b>								
Contracted	52,000	52,000						
	52,000	52,000						
<b>Expenditures Total</b>	<b>52,000</b>	<b>52,000</b>						
<b>Funding</b>								
<b>Reserves</b>								
Res Fund - Sewer Asset Replacement	52,000	52,000						
	52,000	52,000						
<b>Funding Total</b>	<b>52,000</b>	<b>52,000</b>						

# TOWNSHIP OF RUSSELL

## Capital Projects

<b>Project</b>	C0411-22030 roof repair PS#1 Embrun		
<b>Department</b>	Sanitary Sewage System		
<b>Version</b>	Approved Budget	<b>Year</b>	2022

### Description

## Project Description

**Project Summary:** Roof repair at the pumping station #1 in Embrun

**Study:** Asset management

**Level of Service Impact:** maintain current level of service

**Annual Requirement Impact:** maintain

**Sommaire du projet:** Réparation de la toiture à la station de pompage #1 à Embrun

**Étude:** Gestion des actifs

**Impact sur le niveau de service :** Maintenir le niveau de service actuel

**Impact sur le besoin annuel :** Maintenir

### Budget

	Total	2022	2023	2024	2025	2026	2027-2031	2028
<b>Expenditures</b>								
<b>Construction</b>								
Construction	20,000	20,000						
	20,000	20,000						
<b>Expenditures Total</b>	<b>20,000</b>	<b>20,000</b>						
<b>Funding</b>								
<b>Reserves</b>								
Res Fund - Sewer Asset Replacement	20,000	20,000						
	20,000	20,000						
<b>Funding Total</b>	<b>20,000</b>	<b>20,000</b>						

# TOWNSHIP OF RUSSELL

## Capital Projects

<b>Project</b>	C0411-22032 Study upgrade PS#1 Russell		
<b>Department</b>	Sanitary Sewage System		
<b>Version</b>	Approved Budget	<b>Year</b>	2022

### Description

## Project Description

**Project Summary:** Perform study to upgrade / expand the capacity of the pumping station #1 in Russell  
**Study:** Growth management plan and DC  
**Level of Service Impact:** increase level of service  
**Annual Requirement Impact:** to be determine with selected option

**Sommaire du projet:** Compléter une étude pour améliorer / augmenter la capacité de la station de pompage #1 à Russell  
**Étude:** Le plan de gestion de croissance et frais de développement  
**Impact sur le niveau de service :** Augmenter le niveau de service  
**Impact sur le besoin annuel :** À déterminer une fois l'option choisi

### Budget

	Total	2022	2023	2024	2025	2026	2027-2031	2028
<b>Expenditures</b>								
<b>Professional fees</b>								
Engineering	150,000	150,000						
	150,000	150,000						
<b>Expenditures Total</b>	<b>150,000</b>	<b>150,000</b>						
<b>Funding</b>								
<b>Development Charge</b>								
DC Sewer	150,000	150,000						
	150,000	150,000						
<b>Funding Total</b>	<b>150,000</b>	<b>150,000</b>						

# TOWNSHIP OF RUSSELL

## Capital Projects

<b>Project</b>	C0421-20035 Craig Street Storm replacement		
<b>Department</b>	Storm sewer		
<b>Version</b>	Approved Budget	<b>Year</b>	2022

### Description

## Project Description

**Project Summary:** replacement of the storm sewer on Craig St. patnership with UCPR  
**Study:** Storm sewer masterplan  
**Level of Service Impact:** maintain level of service  
**Annual Requirement Impact:** maintain

**Sommaire du projet:** Remplacement de l'égout pluviale sur la rue Craig, avec le patenariat de CUPR  
**Étude:** Leplan directeur d'égout pluvial  
**Impact sur le niveau de service :** Maintenir le niveau de service  
**Impact sur le besoin annuel :** Maintenir

### Budget

	Total	2022	2023	2024	2025	2026	2027-2031	2028
<b>Expenditures</b>								
<b>Construction</b>								
Construction	400,000	400,000						
	400,000	400,000						
<b>Expenditures Total</b>	<b>400,000</b>	<b>400,000</b>						
<b>Funding</b>								
<b>Reserves</b>								
Reserve - Asset Replacement	200,000	200,000						
	200,000	200,000						
<b>Other Municipalities</b>								
Other Municipalities	200,000	200,000						
	200,000	200,000						
<b>Funding Total</b>	<b>400,000</b>	<b>400,000</b>						

# TOWNSHIP OF RUSSELL

## Capital Projects

<b>Project</b>	C0421-22035 Storm sewer repair (various location)		
<b>Department</b>	Storm sewer		
<b>Version</b>	Approved Budget	<b>Year</b>	2022

### Description

## Project Description

**Project Summary:** repair and replace section of storm sewer at various location  
**Study:** Storm sewer masterplan  
**Level of Service Impact:** maintain level of service  
**Annual Requirement Impact:** maintain

**Sommaire du projet:** Réparer et remplacer différentes sections du système d'égout pluvial  
**Étude:** Le plan directeur d'égout pluvial  
**Impact sur le niveau de service :** Maintenir le niveau de service  
**Impact sur le besoin annuel :** Maintenir

### Budget

	Total	2022	2023	2024	2025	2026	2027-2031	2028
<b>Expenditures</b>								
<b>Construction</b>								
Construction	150,000	150,000						
	150,000	150,000						
<b>Expenditures Total</b>	<b>150,000</b>	<b>150,000</b>						
<b>Funding</b>								
<b>Reserves</b>								
Reserve - Asset Replacement	150,000	150,000						
	150,000	150,000						
<b>Funding Total</b>	<b>150,000</b>	<b>150,000</b>						

# TOWNSHIP OF RUSSELL

## Capital Projects

<b>Project</b>	C0421-22073 Municipal drain relocation		
<b>Department</b>	Storm sewer		
<b>Version</b>	Approved Budget	<b>Year</b>	2022

### Description

## Project Description

**Project Summary:** relocation of a municipal drain to allow more development in the 417 industrial park

**Study:** N/A

**Level of Service Impact:** maintain

**Annual Requirement Impact:** maintain

**Sommaire du projet:** relocaliser un drain municipal afin de permettre plus de développement dans le parc industriel 417

**Étude:** S.O.

**Impact sur le niveau de service :** maintenir

**Impact sur le besoin annuel :** maintenir

### Budget

	Total	2022	2023	2024	2025	2026	2027-2031	2028
<b>Expenditures</b>								
<b>Other contracted</b>								
Contracted	230,000	230,000						
	230,000	230,000						
<b>Expenditures Total</b>	<b>230,000</b>	<b>230,000</b>						
<b>Funding</b>								
<b>Reserves</b>								
Reserve - Specific Project (General)	230,000	230,000						
	230,000	230,000						
<b>Funding Total</b>	<b>230,000</b>	<b>230,000</b>						

# TOWNSHIP OF RUSSELL

## Capital Projects

<b>Project</b>	C0431-21035 Water reservoir expansion		
<b>Department</b>	WaterWorks System		
<b>Version</b>	Approved Budget	<b>Year</b>	2022

### Description

## Project Description

**Project Summary:** Design of the expansion of the water reservoir  
**Study:** Project already listed in the DC study  
**Level of Service Impact:**  
**Annual Requirement Impact:** \$60,000

**Sommaire du projet:** Conception de l'agrandissement du réservoir d'eau  
**Étude:** Ce projet est déjà identifié dans l'étude de FD  
**Impact sur le niveau de service :**  
**Impact sur le besoin annuel :** 60000\$

### Budget

	Total	2022	2023	2024	2025	2026	2027-2031	2028
<b>Expenditures</b>								
<b>Professional fees</b>								
Engineering	2,000,000	2,000,000						
	2,000,000	2,000,000						
<b>Expenditures Total</b>	<b>2,000,000</b>	<b>2,000,000</b>						
<b>Funding</b>								
<b>Development Charge</b>								
DC Water	2,000,000	2,000,000						
	2,000,000	2,000,000						
<b>Funding Total</b>	<b>2,000,000</b>	<b>2,000,000</b>						



# TOWNSHIP OF RUSSELL

## Capital Projects

<b>Project</b>	C0431-22025 new hybrid vehicle		
<b>Department</b>	WaterWorks System		
<b>Version</b>	Approved Budget	<b>Year</b>	2022

### Description

## Project Description

**Project Summary:** purchase of a new vehicle; energy efficient vehicle  
**Study:** DC  
**Level of Service Impact:** maintain level of service. (more locates, testing, etc)  
**Annual Requirement Impact:** Approximately \$5,000, will be determined with the purchase price

**Sommaire du projet:** L'achat d'un nouveau véhicule, écoénergétique  
**Étude:** Frais de développement  
**Impact sur le niveau de service :** Maintenir le niveau de service. (Plus de localisation et d'analyse, etc)  
**Impact sur le besoin annuel :** Environ 5 000\$, sera déterminé avec le prix d'achat

### Budget

	Total	2022	2023	2024	2025	2026	2027-2031	2028
<b>Expenditures</b>								
<b>Material &amp; Supplies</b>								
Materials	40,000	40,000						
	40,000	40,000						
<b>Expenditures Total</b>	<b>40,000</b>	<b>40,000</b>						
<b>Funding</b>								
<b>Development Charge</b>								
DC Water	40,000	40,000						
	40,000	40,000						
<b>Funding Total</b>	<b>40,000</b>	<b>40,000</b>						

# TOWNSHIP OF RUSSELL

## Capital Projects

<b>Project</b>	C0431-22036 water valve repair		
<b>Department</b>	WaterWorks System		
<b>Version</b>	Approved Budget	<b>Year</b>	2022

### Description

## Project Description

**Project Summary:** repair and replace water valve at various locations

**Study:** Asset management

**Level of Service Impact:** maintain current level of service

**Annual Requirement Impact:** maintain

**Sommaire du projet:** Réparer et remplacer des valves d'eau à divers endroits.

**Étude:** Gestion des actifs

**Impact sur le niveau de service :** Maintenir le niveau de service actuel

**Impact sur le besoin annuel :** Maintenir

### Budget

	Total	2022	2023	2024	2025	2026	2027-2031	2028
<b>Expenditures</b>								
<b>Other contracted</b>								
Service & Repairs - Equipment	45,000	45,000						
	45,000	45,000						
<b>Expenditures Total</b>	<b>45,000</b>	<b>45,000</b>						
<b>Funding</b>								
<b>Reserves</b>								
Res Fund - Water Asset Replacement	45,000	45,000						
	45,000	45,000						
<b>Funding Total</b>	<b>45,000</b>	<b>45,000</b>						

# TOWNSHIP OF RUSSELL

## Capital Projects

<b>Project</b>	C0720-21058 Russell tennis court resurfacing		
<b>Department</b>	Parks		
<b>Version</b>	Approved Budget	<b>Year</b>	2022

### Description

## Project Description

**Project Summary:** Tennis courts are in need of resurfacing similar to the 2020 Capital assigned to the Embrun Courts. Many blow outs around the netting posts, structural surface cracking and puddling. New netting and post replacement may be also required.

**Study:** N/A

**Level of Service Impact:** N/A

**Annual Requirement Impact:** N/A

**Sommaire du projet :** Les terrains de tennis ont besoin d'un resurfacement similaire à celui des projets capitaux 2020 pour les terrains d'Embrun. Beaucoup de soufflures autour des poteaux des filets, de fissures dans la surface structurelle et de flaques d'eau. De nouveaux filets et le remplacement des poteaux pourront être également nécessaires.

**Étude :** S.O.

**Impact sur le niveau de service :** S.O.

**Impact sur le besoin annuel :** S.O.

### Budget

	Total	2022	2023	2024	2025	2026	2027-2031	2028
<b>Expenditures</b>								
<b>Material &amp; Supplies</b>								
Materials	4,000	4,000						
	4,000	4,000						
<b>Expenditures Total</b>	<b>4,000</b>	<b>4,000</b>						
<b>Funding</b>								
<b>Reserves</b>								
Reserve - Asset Replacement	4,000	4,000						
	4,000	4,000						
<b>Funding Total</b>	<b>4,000</b>	<b>4,000</b>						

# TOWNSHIP OF RUSSELL

## Capital Projects

<b>Project</b>	C0720-21058 Russell tennis court resurfacing		
<b>Department</b>	Parks		
<b>Version</b>	Approved Budget	<b>Year</b>	2022

### Gallery

S:\Department\Parks and Recreation\Budget\2021\Kevin's Capital Projects\My Pictures\MF\Russell Tennis Court.png



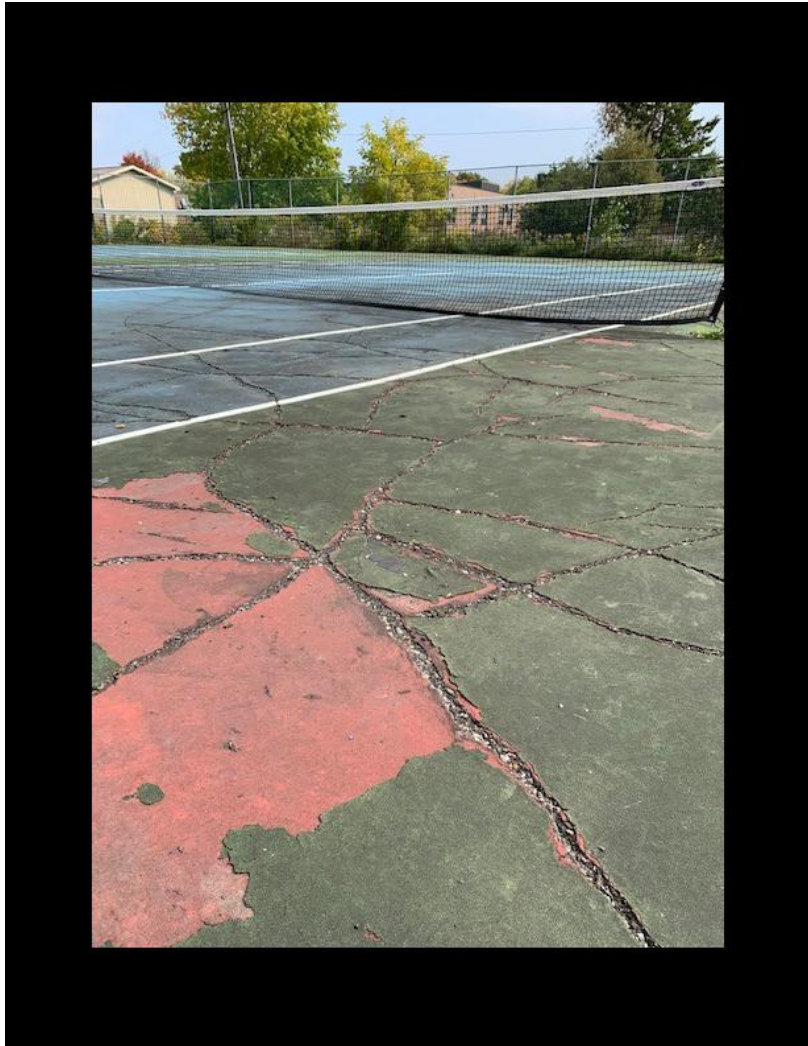
# TOWNSHIP OF RUSSELL

## Capital Projects

<b>Project</b>	C0720-21058 Russell tennis court resurfacing		
<b>Department</b>	Parks		
<b>Version</b>	Approved Budget	<b>Year</b>	2022

### Gallery

S:\Department\Parks and Recreation\Budget\2021\Kevin's Capital Projects\My Pictures\MF\Russell Tennis Court 2.png



# TOWNSHIP OF RUSSELL

## Capital Projects

<b>Project</b>	C0720-21070 Gazebo Installation near Train Station		
<b>Department</b>	Parks		
<b>Version</b>	Approved Budget	<b>Year</b>	2022

### Description

## Project Description

**Project Summary:** Removal of the Pavilion at the end of the trail near train Station as the wood structure is showing signs of deterioration and using existing slab on grade to install a gazebo structure.

Study: N/A

**Level of Service Impact:** N/A

**Annual Requirement Impact:** N/A

**Sommaire du projet :** Suppression du pavillon au bout du sentier près de la station de train, car la structure en bois montre des signes de détérioration et utilisation de la dalle existante au niveau du sol pour installer une structure de type gazebo.

**Étude :** S.O.

**Impact sur le niveau de service :** S.O.

**Impact sur le besoin annuel :** S.O.

### Budget

	Total	2022	2023	2024	2025	2026	2027-2031	2028
<b>Expenditures</b>								
<b>Material &amp; Supplies</b>								
Materials	6,000	6,000						
	6,000	6,000						
<b>Expenditures Total</b>	<b>6,000</b>	<b>6,000</b>						
<b>Funding</b>								
<b>Reserves</b>								
Reserve - Asset Replacement	6,000	6,000						
	6,000	6,000						
<b>Funding Total</b>	<b>6,000</b>	<b>6,000</b>						

# TOWNSHIP OF RUSSELL

## Capital Projects

<b>Project</b>	C0720-21070 Gazebo Installation near Train Station		
<b>Department</b>	Parks		
<b>Version</b>	Approved Budget	<b>Year</b>	2022

### Gallery

S:\Department\Parks and Recreation\Budget\2021\Kevin's Capital Projects\My Pictures\MF\Pavillion replacement 1.png





# TOWNSHIP OF RUSSELL

## Capital Projects

<b>Project</b>	C0720-21070 Gazebo Installation near Train Station		
<b>Department</b>	Parks		
<b>Version</b>	Approved Budget	<b>Year</b>	2022

### Gallery

S:\Department\Parks and Recreation\Budget\2021\Kevin's Capital Projects\My Pictures\MF\Pavillion Replacement 2.png





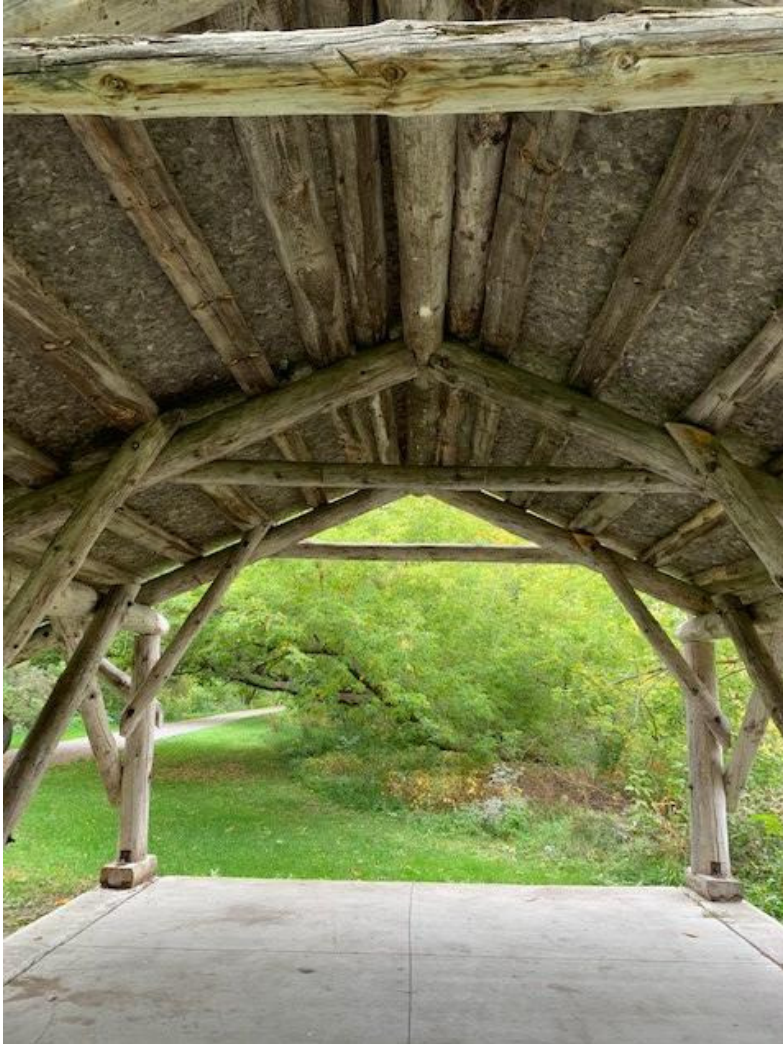
# TOWNSHIP OF RUSSELL

## Capital Projects

<b>Project</b>	C0720-21070 Gazebo Installation near Train Station		
<b>Department</b>	Parks		
<b>Version</b>	Approved Budget	<b>Year</b>	2022

### Gallery

S:\Department\Parks and Recreation\Budget\2021\Kevin's Capital Projects\My Pictures\MF\Pavillion Replacement 3.png



# TOWNSHIP OF RUSSELL

## Capital Projects

<b>Project</b>	C0720-22065 Shingle Replacement Storage Building/Outdoor rink Shack		
<b>Department</b>	Parks		
<b>Version</b>	Approved Budget	<b>Year</b>	2022

### Description

## Project Description

**Project Summary:** Remove old shingles from storage building, outdoor rink as well Pavilion at Séraphin-Marion Park premises. Replace with new shingles and plywood where required. Removal of existing equipment and add venting with a new subfloor in the storage room.

**Study:** Internal Operations Assessment

**Level of Service Impact:** N/A

**Annual Requirement Impact:** N/A

**Sommaire du projet:** Enlever les vieux bardeaux du bâtiment d'entreposage, de la patinoire extérieure ainsi que du Pavillon au parc Séraphin-Marion. Remplacer par de nouveaux bardeaux et de contreplaqué au besoin.

**Étude:** Évaluation Interne des opérations

**Impact sur le niveau de service :** S/O

**Impact sur le besoin annuel :** S/O

### Budget

	Total	2022	2023	2024	2025	2026	2027-2031	2028
<b>Expenditures</b>								
<b>Material &amp; Supplies</b>								
Materials	10,000	10,000						
	10,000	10,000						
<b>Expenditures Total</b>	<b>10,000</b>	<b>10,000</b>						
<b>Funding</b>								
<b>Reserves</b>								
Reserve - Asset Replacement	10,000	10,000						
	10,000	10,000						
<b>Funding Total</b>	<b>10,000</b>	<b>10,000</b>						

# TOWNSHIP OF RUSSELL

## Capital Projects

<b>Project</b>	C0720-22065 Shingle Replacement Storage Building/Outdoor rink Shack		
<b>Department</b>	Parks		
<b>Version</b>	Approved Budget	<b>Year</b>	2022

### Gallery

\\UCPR\Russell\DFS\Users\birdk\My Documents\My Pictures\Marionville Storage Roof.jpg



# TOWNSHIP OF RUSSELL

## Capital Projects

<b>Project</b>	C0720-22065 Shingle Replacement Storage Building/Outdoor rink Shack		
<b>Department</b>	Parks		
<b>Version</b>	Approved Budget	<b>Year</b>	2022

### Gallery

\\UCPR\Russell\DFS\Users\birdk\My Documents\My Pictures\Marionville Outdoor Rink roof.jpg





# TOWNSHIP OF RUSSELL

## Capital Projects

<b>Project</b>	C0720-22065 Shingle Replacement Storage Building/Outdoor rink Shack		
<b>Department</b>	Parks		
<b>Version</b>	Approved Budget	<b>Year</b>	2022

### Gallery

\\UCPR\Russell\DFS\Users\birdk\My Documents\My Pictures\Marionville Pavillion Roof.jpg



# TOWNSHIP OF RUSSELL

## Capital Projects

<b>Project</b>	C0720-22067 Permanent Pitchers Mound Richilieu		
<b>Department</b>	Parks		
<b>Version</b>	Approved Budget	<b>Year</b>	2022

### Description

## Project Description

**Project Summary:** Purchase a permanent pitching mound for Richelieu Ball Park for minor ball users. Currently the mound is man made and requires constant upkeep to achieve the slope and pitch required for fastball. Recommendation to purchase a fabricated pitching mound that is permanent and can be removed in the off season for storage.

**Study:** Operational Assessment Study / User Group feedback

**Level of Service Impact:** N/A

**Annual Requirement Impact:** N/A

**Sommaire du projet:** Acheter un monticule de lanceur permanent pour le terrain de balle Richelieu pour les équipes mineures. Actuellement le monticule est fait à la main et nécessite un entretien constant pour atteindre la pente requise pour la balle rapide. Recommandation d'acheter un monticule permanent qui pourra être retiré hors saison.

**Étude:** Étude d'évaluation opérationnelle et commentaires des utilisateurs

**Impact sur le niveau de service :** S/O

**Impact sur le besoin annuel :** S/O

### Budget

	Total	2022	2023	2024	2025	2026	2027-2031	2028
<b>Expenditures</b>								
<b>Material &amp; Supplies</b>								
Materials	6,500	6,500						
	6,500	6,500						
<b>Expenditures Total</b>	<b>6,500</b>	<b>6,500</b>						
<b>Funding</b>								
<b>Reserves</b>								
Reserve - Asset Replacement	6,500	6,500						
	6,500	6,500						
<b>Funding Total</b>	<b>6,500</b>	<b>6,500</b>						

# TOWNSHIP OF RUSSELL

## Capital Projects

<b>Project</b>	C0720-22067 Permanent Pitchers Mound Richilieu		
<b>Department</b>	Parks		
<b>Version</b>	Approved Budget	<b>Year</b>	2022

### Gallery

\\UCPR\Russell\DFS\Users\birdk\My Documents\My Pictures\Baseball Pitching Mound.jpg



# TOWNSHIP OF RUSSELL

## Capital Projects

<b>Project</b>	C0720-22068 Russell Ball Diamond LED Lights		
<b>Department</b>	Parks		
<b>Version</b>	Approved Budget	<b>Year</b>	2022

### Description

## Project Description

**Project Summary:** Removal of all existing Metal Halide light fixtures from the North and South Russell Ball diamonds and replaced with LED light fixtures.

**Study:** N/A

**Level of Service Impact:** Improve lighting and calls for service to replace bulbs as well as save on energy consumption.

**Annual Requirement Impact:** N/A

**Sommaire du projet:** Suppression de tous les luminaires métalliques halogènes des diamants des terrains de balle de Russell Nord & Sud et remplacer par des luminaires à LED

**Étude:** S/O

**Impact sur le niveau de service :** Améliorer l'éclairage et réduire les appels de service pour remplacer les ampoules ainsi qu'économiser sur la consommation d'énergie.

**Impact sur le besoin annuel :** S/O

### Budget

	Total	2022	2023	2024	2025	2026	2027-2031	2028
<b>Expenditures</b>								
<b>Material &amp; Supplies</b>								
Materials	60,000	60,000						
	60,000	60,000						
<b>Expenditures Total</b>	<b>60,000</b>	<b>60,000</b>						
<b>Funding</b>								
<b>Reserves</b>								
Reserve - Specific Project (General)	60,000	60,000						
	60,000	60,000						
<b>Funding Total</b>	<b>60,000</b>	<b>60,000</b>						



# TOWNSHIP OF RUSSELL

## Capital Projects

<b>Project</b>	C0720-22068 Russell Ball Diamond LED Lights		
<b>Department</b>	Parks		
<b>Version</b>	Approved Budget	<b>Year</b>	2022

### Gallery

\\UCPR\Russell\DFS\Users\birdk\My Documents\My Pictures\Russell Ball Diamond lights.jpg



# TOWNSHIP OF RUSSELL

## Capital Projects

<b>Project</b>	C0720-22068 Russell Ball Diamond LED Lights		
<b>Department</b>	Parks		
<b>Version</b>	Approved Budget	<b>Year</b>	2022

### Gallery

\\UCPR\Russell\DFS\Users\birdk\My Documents\My Pictures\Russell Ball Diamond lights 2.jpg



# TOWNSHIP OF RUSSELL

## Capital Projects

<b>Project</b>	C0751-22060 New Rubber Flooring Embrun Arena		
<b>Department</b>	Embrun Arena		
<b>Version</b>	Approved Budget	<b>Year</b>	2022

### Description

## Project Description

**Project Summary:** Removal of old rubber flooring in main entrances and install new flooring.  
**Study:** N/A  
**Level of Service Impact:** Better aesthetics with smooth transition through doorways  
**Annual Requirement Impact:** N/A

**Sommaire du projet:** Enlever & remplacer le vieux plancher de caoutchouc dans les entrées principales.  
**Étude:** S/O  
**Impact sur le niveau de service :** Meilleure esthétique avec une transition uniforme entre les portes  
**Impact sur le besoin annuel :** S/O

### Budget

	Total	2022	2023	2024	2025	2026	2027-2031	2028
<b>Expenditures</b>								
<b>Material &amp; Supplies</b>								
Materials - Equipment	8,000	8,000						
	8,000	8,000						
<b>Expenditures Total</b>	<b>8,000</b>	<b>8,000</b>						
<b>Funding</b>								
<b>Reserves</b>								
Reserve - Asset Replacement	8,000	8,000						
	8,000	8,000						
<b>Funding Total</b>	<b>8,000</b>	<b>8,000</b>						

# TOWNSHIP OF RUSSELL

## Capital Projects

<b>Project</b>	C0751-22060 New Rubber Flooring Embrun Arena		
<b>Department</b>	Embrun Arena		
<b>Version</b>	Approved Budget	<b>Year</b>	2022

### Gallery

\\UCPR\Russell\DFS\Users\birdk\My Documents\My Pictures\Embrun Arena Flooring.jpg





# TOWNSHIP OF RUSSELL

## Capital Projects

<b>Project</b>	C0751-22060 New Rubber Flooring Embrun Arena		
<b>Department</b>	Embrun Arena		
<b>Version</b>	Approved Budget	<b>Year</b>	2022

### Gallery

\\UCPR\Russell\DFS\Users\birdk\My Documents\My Pictures\Embrun Arena Flooring 2.jpg



# TOWNSHIP OF RUSSELL

## Capital Projects

<b>Project</b>	C0751-22064 LED Sign Arena Entrance		
<b>Department</b>	Embrun Arena		
<b>Version</b>	Approved Budget	<b>Year</b>	2022

### Description

## Project Description

**Project Summary:** Purchasing and installing a new LED sign to replace the current Billboard at the front of the Embrun Arena. Currently the sign we have is passed its life cycle and in poor condition. The current sign no longer serves its functionality, so public messaging for events can longer be advertised. The new LED sign could be transferable and placed at the new Recreational Complex site at a later date.

**Study:** Internal Operations Assessment

**Level of Service Impact:** Increased public awareness for current events in our community and at our recreational facilities

**Annual Requirement Impact:** \$7,500

**Sommaire du projet:** Achat et installation d'un nouveau babillard DEL pour remplacer le panneau actuel à l'avant de l'aréna qui a dépassé son cycle de vie et est en mauvais état. Les messages publics ne peuvent plus être annoncés. Le nouveau babillard pourrait être transféré au Complexe Sportif à une date ultérieure.

**Étude:** Évaluation interne

**Impact sur le niveau de service :** Sensibilisation du public aux événements en cours de notre communauté et dans nos installations récréatives

**Impact sur le besoin annuel :** 7500\$

### Budget

	Total	2022	2023	2024	2025	2026	2027-2031	2028
<b>Expenditures</b>								
<b>Material &amp; Supplies</b>								
Materials	75,000	75,000						
	75,000	75,000						
<b>Expenditures Total</b>	<b>75,000</b>	<b>75,000</b>						
<b>Funding</b>								
<b>Reserves</b>								
Reserve - Specific Project (General)	75,000	75,000						
	75,000	75,000						
<b>Funding Total</b>	<b>75,000</b>	<b>75,000</b>						

# TOWNSHIP OF RUSSELL

## Capital Projects

Project	C0751-22064 LED Sign Arena Entrance		
Department	Embrun Arena		
Version	Approved Budget	Year	2022

### Gallery

\\UCPR\Russell\DFS\Users\birdk\My Documents\My Pictures\Arena Sign current.jpg



# TOWNSHIP OF RUSSELL

## Capital Projects

<b>Project</b>	C0753-21076 HVAC Replacement 2021		
<b>Department</b>	C. Com. C. Piché		
<b>Version</b>	Approved Budget	<b>Year</b>	2022

### Description

## Project Description

**Project Summary:** Replacement of rooftop units to supply HVAC throughout building. Engineered report study conducted in 2020. See Report with multiple options.

**Study:** AirWaterEngineering2020

**Level Of Service Impact:** N/A

**Annual Requirement Impact:** N/A

**Sommaire du projet :** Remplacement des unités de toit pour alimenter la climatisation dans tout le bâtiment. Rapport d'étude d'ingénierie réalisé en 2020. Voir rapport avec options multiples.

**Étude :** AirWaterEngineering2020

**Impact sur le niveau de service :** S.O.

**Impact sur le besoin annuel :** S.O.

### Budget

	Total	2022	2023	2024	2025	2026	2027-2031	2028
<b>Expenditures</b>								
<b>Material &amp; Supplies</b>								
Materials - Equipment	475,600	475,600						
	475,600	475,600						
<b>Expenditures Total</b>	<b>475,600</b>	<b>475,600</b>						
<b>Funding</b>								
<b>Reserves</b>								
Reserve - Asset Replacement	87,800	87,800						
	87,800	87,800						
<b>Grants - Federal Gas Tax</b>								
Federal Gas Tax	150,000	150,000						
	150,000	150,000						
<b>Unfinanced</b>								
Unfinanced at YE	237,800	237,800						
	237,800	237,800						
<b>Funding Total</b>	<b>475,600</b>	<b>475,600</b>						



# TOWNSHIP OF RUSSELL

## Capital Projects

<b>Project</b>	C0755-21061 Ford F-150 Replacement		
<b>Department</b>	Russell Arena		
<b>Version</b>	Approved Budget	<b>Year</b>	2022

### Description

## Project Description

**Project Summary:** Replacement of current work vehicle. The Ford F150-2012 is experiencing mechanical issues and has high mileage (214,000 km).  
**Study:** Internal Operations to be included in Fleet Management System  
**Level of Service Impact:** N/A  
**Annual Requirement Impact:** N/A

**Sommaire du projet :** Remplacement du véhicule de travail actuel. Le Ford F150-2012 connaît des problèmes mécaniques et a un kilométrage élevé (214 000 km).  
**Étude :** Opérations internes à inclure dans le système de gestion de flotte.  
**Impact sur le niveau de service :** S.O.  
**Impact sur le besoin annuel :** S.O.

### Budget

	Total	2022	2023	2024	2025	2026	2027-2031	2028
<b>Expenditures</b>								
<b>Material &amp; Supplies</b>								
Materials	10,000	10,000						
	10,000	10,000						
<b>Expenditures Total</b>	<b>10,000</b>	<b>10,000</b>						
<b>Funding</b>								
<b>Reserves</b>								
Reserve - Asset Replacement	10,000	10,000						
	10,000	10,000						
<b>Funding Total</b>	<b>10,000</b>	<b>10,000</b>						

# TOWNSHIP OF RUSSELL

## Capital Projects

<b>Project</b>	C0755-21065 Compressor #1 Change - Oil Separator		
<b>Department</b>	Russell Arena		
<b>Version</b>	Approved Budget	<b>Year</b>	2022

### Description

## Project Description

**Project Summary:** One of the two Compressors is recommended to be changed. Extended life expectancy of compressors by Rehaul in the past. Compressor systems to cool the ice surface in Russell Arena are in need of replacement to ensure there are no operation failures in years to come.

**Study:** CimcorefrigerationConditionAssessment

**Level Of Service Impact:** N/A

**Annual Requirement Impact:** \$1,933

**Sommaire du projet :** Il est recommandé de changer l'un des deux compresseurs. L'espérance de vie des compresseurs a été prolongée dans le passé. Les systèmes de compresseurs destinés à refroidir la surface de glace dans l'aréna de Russell doivent être remplacés pour garantir qu'il n'y aura pas de défaillances de fonctionnement dans les années à venir.

**Étude :** Évaluation des conditions de réfrigération de Cimco

**Impact sur le niveau de service :** S.O.

**Impact sur le besoin annuel :** 1933\$

### Budget

	Total	2022	2023	2024	2025	2026	2027-2031	2028
<b>Expenditures</b>								
<b>Material &amp; Supplies</b>								
Materials	29,000	29,000						
	29,000	29,000						
<b>Expenditures Total</b>	<b>29,000</b>	<b>29,000</b>						
<b>Funding</b>								
<b>Reserves</b>								
Reserve - Asset Replacement	29,000	29,000						
	29,000	29,000						
<b>Funding Total</b>	<b>29,000</b>	<b>29,000</b>						

# TOWNSHIP OF RUSSELL

## Capital Projects

Project	C0755-21065 Compressor #1 Change - Oil Separator		
Department	Russell Arena		
Version	Approved Budget	Year	2022

### Gallery

S:\Department\Parks and Recreation\Budget\2021\Kevin's Capital Projects\My Pictures\MF\Compressor 1.png



# TOWNSHIP OF RUSSELL

## Capital Projects

Project	C0755-21065 Compressor #1 Change - Oil Separator		
Department	Russell Arena		
Version	Approved Budget	Year	2022

### Gallery

S:\Department\Parks and Recreation\Budget\2021\Kevin's Capital Projects\My Pictures\MF\Compressor 2.png



# TOWNSHIP OF RUSSELL

## Capital Projects

<b>Project</b>	C0755-22055 Working Platform Installation under Dehumidifier		
<b>Department</b>	Russell Arena		
<b>Version</b>	Approved Budget	<b>Year</b>	2022

### Description

## Project Description

**Project Summary:** Purchase & Installation of a working platform to be added under dehumidification unit in arena

**Study:** N/A

**Level of Service Impact:** N/A

**Annual Requirement Impact:** \$1,600

**Sommaire du Projet:** Achat et installation d'une plateforme sous le déshumidificateur dans l'aréna

**Étude:** S/O

**Impact sur le niveau de service:** S/O

**Impact sur le besoin annuel:** 1600\$

### Budget

	Total	2022	2023	2024	2025	2026	2027-2031	2028
<b>Expenditures</b>								
<b>Material &amp; Supplies</b>								
Materials - Equipment	20,000	20,000						
	20,000	20,000						
<b>Professional fees</b>								
Engineering	12,000	12,000						
	12,000	12,000						
<b>Expenditures Total</b>	<b>32,000</b>	<b>32,000</b>						
<b>Funding</b>								
<b>Reserves</b>								
Reserve - Asset Replacement	32,000	32,000						
	32,000	32,000						
<b>Funding Total</b>	<b>32,000</b>	<b>32,000</b>						

# TOWNSHIP OF RUSSELL

## Capital Projects

<b>Project</b>	C0755-22055 Working Platform Installation under Dehumidifier		
<b>Department</b>	Russell Arena		
<b>Version</b>	Approved Budget	<b>Year</b>	2022

### Gallery

\\UCPR\Russell\DFS\Users\birdk\My Documents\My Pictures\Saved Pictures\Working Platform.jpg





# TOWNSHIP OF RUSSELL

## Capital Projects

<b>Project</b>	C0755-22057 Dehumidifier Replacement		
<b>Department</b>	Russell Arena		
<b>Version</b>	Approved Budget	<b>Year</b>	2022

### Description

## Project Description

**Project Summary:** Replacement of secondary Dehumidification unit at the Russell Arena as it is past its life cycle. Uses R22 refrigerant currently and supply will soon be difficult to obtain.

**Study:** Condition Assessment Citywide

**Level of Service Impacted:** Less calls for service and better dehumidification as we would go from a 5 tonne unit to a 7.5 Tonne

**Annual Requirement Impact:** N/A

**Sommaire du projet:** Remplacement du déshumidificateur secondaire à l'aréna de Russell car il excède sa durée de vie. Utilise actuellement le réfrigérant R22 et l'approvisionnement sera bientôt difficile à obtenir.

**Étude:** Évaluation sur l'état des immobilisations - Citywide

**Impact sur le niveau de service :** Réduction des appels de service et un meilleur rendement dû au fait que la capacité de l'unité augmentera de 5 tonnes à 7.5 tonnes

**Impact sur le besoin annuel :** S/O

### Budget

	Total	2022	2023	2024	2025	2026	2027-2031	2028
<b>Expenditures</b>								
<b>Material &amp; Supplies</b>								
Materials - Equipment	38,000	38,000						
	38,000	38,000						
<b>Expenditures Total</b>	<b>38,000</b>	<b>38,000</b>						
<b>Funding</b>								
<b>Reserves</b>								
Reserve - Asset Replacement	38,000	38,000						
	38,000	38,000						
<b>Funding Total</b>	<b>38,000</b>	<b>38,000</b>						

# TOWNSHIP OF RUSSELL

## Capital Projects

Project	C0755-22057 Dehumidifier Replacement		
Department	Russell Arena		
Version	Approved Budget	Year	2022

### Gallery

\\UCPR\Russell\DFS\Users\Birdk\My Documents\My Pictures\Dehumidifier Russell.jpg





# TOWNSHIP OF RUSSELL

## Capital Projects

Project	C0755-22057 Dehumidifier Replacement		
Department	Russell Arena		
Version	Approved Budget	Year	2022

### Gallery

\\UCPR\Russell\DFS\Users\birdk\My Documents\My Pictures\Dehumidifier Russell Nameplate.jpg



# TOWNSHIP OF RUSSELL

## Capital Projects

<b>Project</b>	C0755-22058 Front Entrance Flooring/Bathroom		
<b>Department</b>	Russell Arena		
<b>Version</b>	Approved Budget	<b>Year</b>	2022

### Description

## Project Description

**Project Summary:** Removal of existing ceramic tiles in front entrance and replace with rubberized flooring. Removal of existing rubber flooring in washrooms and replace with new.

**Study:** N/A

**Level of Service Impact:** Better aesthetic look and increased slip protection. Will allow users with skates access more areas.

**Annual Requirement Impact:** N/A

**Sommaire du projet:** Remplacer les carreaux de céramique existants dans l'entrée principale par un revêtement de sol en caoutchouc. Remplacer le revêtement de sol de caoutchouc dans les salles de bain par un nouveau.

**Étude:** S/O

**Impact sur le niveau de service :** Meilleur aspect esthétique et protection antidérapante. Permettra aux utilisateurs avec des patins d'accéder à plus de zones.

**Impact sur le besoin annuel :** S/O

### Budget

	Total	2022	2023	2024	2025	2026	2027-2031	2028
<b>Expenditures</b>								
<b>Material &amp; Supplies</b>								
Materials - Equipment	26,000	26,000						
	26,000	26,000						
<b>Expenditures Total</b>	<b>26,000</b>	<b>26,000</b>						
<b>Funding</b>								
<b>Reserves</b>								
Reserve - Asset Replacement	26,000	26,000						
	26,000	26,000						
<b>Funding Total</b>	<b>26,000</b>	<b>26,000</b>						

# TOWNSHIP OF RUSSELL

## Capital Projects

<b>Project</b>	C0755-22058 Front Entrance Flooring/Bathroom		
<b>Department</b>	Russell Arena		
<b>Version</b>	Approved Budget	<b>Year</b>	2022

### Gallery

\\UCPR\Russell\DFS\Users\birdk\My Documents\My Pictures\Flooring Russell Front Entrance.jpg



# TOWNSHIP OF RUSSELL

## Capital Projects

<b>Project</b>	C0755-22058 Front Entrance Flooring/Bathroom		
<b>Department</b>	Russell Arena		
<b>Version</b>	Approved Budget	<b>Year</b>	2022

### Gallery

\\UCPR\Russell\DFS\Users\birdk\My Documents\My Pictures\Flooring washrooms Russell Arena.jpg



# TOWNSHIP OF RUSSELL

## Capital Projects

<b>Project</b>	C0755-22058 Front Entrance Flooring/Bathroom		
<b>Department</b>	Russell Arena		
<b>Version</b>	Approved Budget	<b>Year</b>	2022

### Gallery

\\UCPR\Russell\DFS\Users\birdk\My Documents\My Pictures\Flooring washrooms Russell Arena 2.jpg



# TOWNSHIP OF RUSSELL

## Capital Projects

<b>Project</b>	C0755-22063 Ice Resurfacers Russell Arena		
<b>Department</b>	Russell Arena		
<b>Version</b>	Approved Budget	<b>Year</b>	2022

### Description

## Project Description

**Project Summary:** Replacement of Ice resurfacers from Olympia to Zamboni for the Russell Arena. The existing Olympia Millennium is a 2001 model that was purchased used in 2006. The life expectancy of an ice resurfacers is usually between 10-20 years depending on the preventive maintenance that is done on an annual basis. Costs for repairs noted in the past three years increasing exponentially.

**Study:** Internal Operations Assessment

**Level Of Service Impact:** N/A

**Annual Requirement Impact:** N/A

**Sommaire du projet:** Remplacement de la surfaceuse à glace d'Olympia, a Zamboni pour l'aréna de Russell. L'Olympia Millennium existant est un modèle de 2001 qui a été acheté en 2006. L'espérance de vie d'une surfaceuse à glace se situe généralement entre 10 et 20 ans selon l'entretien préventif annuel. Les coûts de réparations constatés au cours des trois dernières années augmentent de façon exponentielle.

**Étude:** S/O

**Impact sur le niveau de service:** S/O

**Impact sur le besoin annuel:** S/O

### Budget

	Total	2022	2023	2024	2025	2026	2027-2031	2028
<b>Expenditures</b>								
<b>Material &amp; Supplies</b>								
Materials - Equipment	100,000	100,000						
	100,000	100,000						
<b>Expenditures Total</b>	<b>100,000</b>	<b>100,000</b>						
<b>Funding</b>								
<b>Reserves</b>								
Reserve - Asset Replacement	100,000	100,000						
	100,000	100,000						
<b>Funding Total</b>	<b>100,000</b>	<b>100,000</b>						

# TOWNSHIP OF RUSSELL

## Capital Projects

<b>Project</b>	C0755-22063 Ice Resurfacers Russell Arena		
<b>Department</b>	Russell Arena		
<b>Version</b>	Approved Budget	<b>Year</b>	2022

### Gallery

\\UCPR\Russell\DFS\Users\birdk\My Documents\My Pictures\zamboni.jpg



# TOWNSHIP OF RUSSELL

## Capital Projects

<b>Project</b>	C0757-22066 Paving Side Entrance Hall		
<b>Department</b>	Marionville Community Hall		
<b>Version</b>	Approved Budget	<b>Year</b>	2022

### Description

## Project Description

**Project Summary:** Removal of existing asphalt to replace with new asphalt at the side entrance of the Marionville Community Center.

**Study:** N/A

**Level of Service Impact:** N/A

**Annual Requirement Impact:** N/A

**Sommaire du projet:** Remplacement de l'asphalte à l'entrée de côté du Centre Communautaire de Marionville

**Étude:** S/O

**Impact sur le niveau de service:** S/O

**Impact sur le besoin annuel:** S/O

### Budget

	Total	2022	2023	2024	2025	2026	2027-2031	2028
<b>Expenditures</b>								
<b>Material &amp; Supplies</b>								
Materials - Equipment	20,000	20,000						
	20,000	20,000						
<b>Expenditures Total</b>	<b>20,000</b>	<b>20,000</b>						
<b>Funding</b>								
<b>Reserves</b>								
Reserve - Asset Replacement	20,000	20,000						
	20,000	20,000						
<b>Funding Total</b>	<b>20,000</b>	<b>20,000</b>						



# TOWNSHIP OF RUSSELL

## Capital Projects

<b>Project</b>	C0757-22066 Paving Side Entrance Hall		
<b>Department</b>	Marionville Community Hall		
<b>Version</b>	Approved Budget	<b>Year</b>	2022

### Gallery

\\UCPR\Russel\DFS\Users\birdk\My Documents\My Pictures\Marionville Side Entrance.jpg



# TOWNSHIP OF RUSSELL

## Capital Projects

<b>Project</b>	C0758-22054 Bathroom Renovations		
<b>Department</b>	Sports and Youth Centre		
<b>Version</b>	Approved Budget	<b>Year</b>	2022

### Description

## Project Description

**Project Summary:** Mens and Ladies washrooms in need of new equipment (urinals and sink fixture) with new counter tops in both bathrooms.

**Study:** N/A

**Level of Service Impact:** N/A

**Annual Requirement Impact:** N/A

**Sommaire du projet:** Les salles de bains sont en besoin de nouvel équipement tels que comptoirs, urinoires, et robinets

**Étude:** S/O

**Impact sur le niveau de service:** S/O

**Impact sur le besoin annuel:** S/O

### Budget

	Total	2022	2023	2024	2025	2026	2027-2031	2028
<b>Expenditures</b>								
<b>Material &amp; Supplies</b>								
Materials - Equipment	9,500	9,500						
	9,500	9,500						
<b>Expenditures Total</b>	<b>9,500</b>	<b>9,500</b>						
<b>Funding</b>								
<b>Reserves</b>								
Reserve - Asset Replacement	9,500	9,500						
	9,500	9,500						
<b>Funding Total</b>	<b>9,500</b>	<b>9,500</b>						

# TOWNSHIP OF RUSSELL

## Capital Projects

<b>Project</b>	C0758-22054 Bathroom Renovations		
<b>Department</b>	Sports and Youth Centre		
<b>Version</b>	Approved Budget	<b>Year</b>	2022

### Gallery

\\UCPR\Russel\DFS\Users\birdk\My Documents\My Pictures\Youth Center Bathroom.jpg



# TOWNSHIP OF RUSSELL

## Capital Projects

<b>Project</b>	C0758-22054 Bathroom Renovations		
<b>Department</b>	Sports and Youth Centre		
<b>Version</b>	Approved Budget	<b>Year</b>	2022

### Gallery

\\UCPR\Russell\DFS\Users\birdk\My Documents\My Pictures\Youth Center Bathroom 2.jpg



# TOWNSHIP OF RUSSELL

## Capital Projects

<b>Project</b>	C0759-22047 Replacement of Pool Heater		
<b>Department</b>	Pool		
<b>Version</b>	Approved Budget	<b>Year</b>	2022

### Description

## Project Description

**Project Summary:** Pool Heater past its life cycle and needs to be replaced to ensure proper water temperature of the outdoor pool.  
**Study:** N/A  
**Level of Service Impact:** N/A  
**Annual Requirement Impact:** N/A

**Sommaire du projet:** Le chauffe-piscine est à la fin de sa durée de vie et a besoin d'être remplacé pour assurer une température d'eau adéquate  
**Étude:** S/O  
**Impact sur le niveau de service:** S/O  
**Impact sur le besoin annuel:** S/O

### Budget

	Total	2022	2023	2024	2025	2026	2027-2031	2028
<b>Expenditures</b>								
<b>Other contracted</b>								
Service & Repairs - Equipment	9,500	9,500						
	9,500	9,500						
<b>Expenditures Total</b>	<b>9,500</b>	<b>9,500</b>						
<b>Funding</b>								
<b>Reserves</b>								
Reserve - Asset Replacement	9,500	9,500						
	9,500	9,500						
<b>Funding Total</b>	<b>9,500</b>	<b>9,500</b>						

# TOWNSHIP OF RUSSELL

## Capital Projects

<b>Project</b>	C0759-22047 Replacement of Pool Heater		
<b>Department</b>	Pool		
<b>Version</b>	Approved Budget	Year	2022

### Gallery

\\UCPR\Russell\DFS\Users\Birdk\My Documents\My Pictures\Pool Heater.jpg



# TOWNSHIP OF RUSSELL

## Capital Projects

<b>Project</b>	C0765-22061 Safety Netting Add-On		
<b>Department</b>	Sports Dome		
<b>Version</b>	Approved Budget	<b>Year</b>	2022

### Description

## Project Description

**Project Summary:** Purchase & Install new safety netting at West Entrance of the Sports dome. New netting will require anchoring to existing dome material and hanger modifications.

**Study:** N/A

**Level of Service Impact:** Enhances safety to users and protect equipment outside the turf playing area. Currently the netting is not high enough in the West end of the dome to prevent objects from going over.

**Annual Requirement Impact:** \$1,500

**Sommaire du projet:** Achat & Installation d'un nouveau filet de protection à l'entrée ouest du dôme sportif. Le nouveau filet nécessitera un ancrage au matériel du dôme existant ainsi que des modifications de suspension.

**Étude:** S/O

**Impact sur le niveau du service:** Améliorer la sécurité des utilisateurs et protection de l'équipement à l'extérieur de l'aire de jeu en gazon. Actuellement, le filet n'est pas assez haut à l'extrémité ouest pour empêcher les objets de passer.

**Impact sur le besoin annuel:** 1500\$

### Budget

	Total	2022	2023	2024	2025	2026	2027-2031	2028
<b>Expenditures</b>								
<b>Material &amp; Supplies</b>								
Materials - Equipment	15,000	15,000						
	15,000	15,000						
<b>Expenditures Total</b>	<b>15,000</b>	<b>15,000</b>						
<b>Funding</b>								
<b>Reserves</b>								
Reserve - Asset Replacement	15,000	15,000						
	15,000	15,000						
<b>Funding Total</b>	<b>15,000</b>	<b>15,000</b>						



# TOWNSHIP OF RUSSELL

## Capital Projects

<b>Project</b>	C0765-22061 Safety Netting Add-On		
<b>Department</b>	Sports Dome		
<b>Version</b>	Approved Budget	<b>Year</b>	2022

### Gallery

\\UCPR\Russell\DFS\Users\birdk\My Documents\My Pictures\Netting Sports dome.jpg





# TOWNSHIP OF RUSSELL

## Capital Projects

<b>Project</b>	C0810-22011 Comprehensive Review Official Plan		
<b>Department</b>	Planning and Zoning		
<b>Version</b>	Approved Budget	<b>Year</b>	2022

### Description

## Project Description

**Project Summary:** Comprehensive review of official plan

**Study:**

**Level of Service Impact:** N/A

**Annual Requirement Impact:** N/A

**Sommaire du projet:** Examen complet du plan officiel

**Étude:**

**Impact sur le niveau de service:** S/O

**Impact sur le besoin annuel:** S/O

### Budget

	Total	2022	2023	2024	2025	2026	2027-2031	2028
<b>Expenditures</b>								
<b>Professional fees</b>								
Professional Fees	35,000	35,000						
	35,000	35,000						
<b>Expenditures Total</b>	<b>35,000</b>	<b>35,000</b>						
<b>Funding</b>								
<b>Reserves</b>								
Reserve - Asset Replacement	17,500	17,500						
	17,500	17,500						
<b>Development Charge</b>								
DC Administration	17,500	17,500						
	17,500	17,500						
<b>Funding Total</b>	<b>35,000</b>	<b>35,000</b>						

# TOWNSHIP OF RUSSELL

## Capital Projects

<b>Project</b>	C0821-22048 Extension of Emard street in 417 industrial park		
<b>Department</b>	Industrial Park 417		
<b>Version</b>	Approved Budget	<b>Year</b>	2022

### Description

## Project Description

**Project Summary:** Extension of Emard Street in the 417 Industrial Park  
**Study:**  
**Level of Service Impact:**  
**Annual Requirement Impact:** \$8,000

**Sommaire du Projet:** Prolongement de la rue Émard dans le parc industriel de la 417  
**Étude:**  
**Impact sur le niveau de service:**  
**Impact sur le besoin annuel:** 8000\$

### Budget

	Total	2022	2023	2024	2025	2026	2027-2031	2028
<b>Expenditures</b>								
<b>Other contracted</b>								
Contracted	800,000	400,000	400,000					
	800,000	400,000	400,000					
<b>Expenditures Total</b>	<b>800,000</b>	<b>400,000</b>	<b>400,000</b>					
<b>Funding</b>								
<b>Reserves</b>								
Reserve - Specific Project (General)	400,000	400,000						
	400,000	400,000						
<b>Funding Total</b>	<b>400,000</b>	<b>400,000</b>						

# TOWNSHIP OF RUSSELL

## Capital Projects

<b>Project</b>	C0821-22049 Hydro extension on Emard street		
<b>Department</b>	Industrial Park 417		
<b>Version</b>	Approved Budget	<b>Year</b>	2022

### Description

## Project Description

**Project Summary:** Extend hydro services from Robot Street to Eadie Road  
**Study:** N/A  
**Level of Service Impact:** Service available at the property line for each parcel of land sold.  
**Annual Requirement Impact:**

**Sommaire du projet:** Extension des services d'hydro à partir de la rue Robot jusqu'à la rue Eadie.  
**Étude:** S.O.  
**Impact sur le niveau de service:** Service disponible à la ligne de propriété de chaque terrain vendu.  
**Impact sur le besoin annuel :**

### Budget

	Total	2022	2023	2024	2025	2026	2027-2031	2028
<b>Expenditures</b>								
<b>Other contracted</b>								
Contracted	330,000	165,000	165,000					
	330,000	165,000	165,000					
<b>Expenditures Total</b>	<b>330,000</b>	<b>165,000</b>	<b>165,000</b>					
<b>Funding</b>								
<b>Reserves</b>								
Reserve - Specific Project (General)	165,000	165,000						
	165,000	165,000						
<b>Funding Total</b>	<b>165,000</b>	<b>165,000</b>						

# TOWNSHIP OF RUSSELL

## Capital Projects

<b>Project</b>	C0821-22050 Street Lights on Emard Street		
<b>Department</b>	Industrial Park 417		
<b>Version</b>	Approved Budget	<b>Year</b>	2022

### Description

## Project Description

**Project Summary:** Installation of 25 street lights on existing portion of Emard Street and extension of Emard Street

**Study:** N/A

**Level of Service Impact:**

**Annual Requirement Impact:** \$500

**Sommaire du projet:** Installation de 25 lumières de rue sur la portion existante et l'expansion de la rue Émard

**Étude:** S.O.

**Impact sur le niveau de service:**

**Impact sur le besoin annuel :** 500\$

### Budget

	Total	2022	2023	2024	2025	2026	2027-2031	2028
<b>Expenditures</b>								
<b>Other contracted</b>								
Contracted	80,000	40,000	40,000					
	80,000	40,000	40,000					
<b>Expenditures Total</b>	<b>80,000</b>	<b>40,000</b>	<b>40,000</b>					
<b>Funding</b>								
<b>Reserves</b>								
Reserve - Specific Project (General)	40,000	40,000						
	40,000	40,000						
<b>Funding Total</b>	<b>40,000</b>	<b>40,000</b>						

# TOWNSHIP OF RUSSELL

## Capital Projects

<b>Project</b>	C0821-22051 Natural gas extension on Emard street		
<b>Department</b>	Industrial Park 417		
<b>Version</b>	Approved Budget	<b>Year</b>	2022

### Description

## Project Description

**Project Summary:** Extension on existing portion of Emard Street and on new connection of Emard Street following the municipal drain relocation.

**Study:** N/A

**Level of Service Impact:** Service available at the property line for each parcel of land sold.

**Annual Requirement Impact:**

**Sommaire du projet:** Extension sur la portion existante de la rue Émard et sur la nouvelle connexion de la rue Émard suite à la relocalisation du drain municipal.

**Étude:** S.O.

**Impact sur le niveau de service :** Service disponible à la ligne de propriété de chaque terrain vendu.

**Impact sur le besoin annuel :**

### Budget

	Total	2022	2023	2024	2025	2026	2027-2031	2028
<b>Expenditures</b>								
<b>Other contracted</b>								
Contracted	227,400	113,700	113,700					
	227,400	113,700	113,700					
<b>Expenditures Total</b>	<b>227,400</b>	<b>113,700</b>	<b>113,700</b>					
<b>Funding</b>								
<b>Reserves</b>								
Reserve - Specific Project (General)	113,700	113,700						
	113,700	113,700						
<b>Funding Total</b>	<b>113,700</b>	<b>113,700</b>						

# TOWNSHIP OF RUSSELL

## Capital Projects

<b>Project</b>	C0821-22052 New directional sign / 417 industrial park		
<b>Department</b>	Industrial Park 417		
<b>Version</b>	Approved Budget	<b>Year</b>	2022

### Description

## Project Description

**Project Summary:** Installation of a new directional sign at the south entrance of the Industrial Park. Option of a second sponsorship program for businesses located in the Industrial Park.

**Study:** N/A

**Level of Service Impact:** Increase in visibility for the park and our businesses

**Annual Requirement Impact:** Hydro electricity if the sign has lighting

**Sommaire du projet:** Installation d'une nouvelle enseigne directionnelle à l'entrée sud du Parc Industriel. Option d'un deuxième programme de commandites pour les entreprises situées dans le Parc Industriel.

**Étude:** S/O

**Impact sur le niveau de service:** Augmente la visibilité de notre parc et de nos entreprises locales

**Impact sur le besoin annuel:** Électricité par Hydro si l'enseigne a de la lumière

### Budget

	Total	2022	2023	2024	2025	2026	2027-2031	2028
<b>Expenditures</b>								
<b>Other contracted</b>								
Contracted	80,000	80,000						
	80,000	80,000						
<b>Expenditures Total</b>	<b>80,000</b>	<b>80,000</b>						
<b>Funding</b>								
<b>Reserves</b>								
Reserve - Specific Project (General)	68,246	68,246						
	68,246	68,246						
<b>Tax levies / User fees</b>								
Tax Levy	11,754	11,754						
	11,754	11,754						
<b>Funding Total</b>	<b>80,000</b>	<b>80,000</b>						

# TOWNSHIP OF RUSSELL

## Capital Projects

<b>Project</b>	C0823-20057 revitalisation de la rue principal		
<b>Department</b>	Economic Development		
<b>Version</b>	Approved Budget	<b>Year</b>	2022

### Description

## Project Description

**Project Summary:** Realignment of Notre Dame and Blais street / creation of public realm / beautification of the downtown and public parking

**Study:** Traffic study and streetscape master plan completed

**Level of Service Impact:** Increase safety and facilitate pedestrian movement

**Annual Requirement Impact:** Will increase depending on new asset acquisitions

**Sommaire du Projet:** Réalignement de la rue Notre Dame et la rue Blais / création d'un espace pour le public / revitalisation du cœur du village et création d'un stationnement public.

**Étude:** Étude de circulation et étude de paysage de rue complété.

**Impact sur le niveau de service:** augmente les déplacements sécuritaires et les déplacements piétonniers.

**Impact sur le besoin annuel:** Augmentera en fonction des nouvelles acquisitions d'actifs

### Budget

	Total	2022	2023	2024	2025	2026	2027-2031	2028
<b>Expenditures</b>								
<b>Construction</b>								
Construction	125,000	125,000						
	125,000	125,000						
<b>Expenditures Total</b>	<b>125,000</b>	<b>125,000</b>						
<b>Funding</b>								
<b>Grants - Other Prov &amp;/or Fed</b>								
Provincial Grant	125,000	125,000						
	125,000	125,000						
<b>Funding Total</b>	<b>125,000</b>	<b>125,000</b>						

# TOWNSHIP OF RUSSELL

## Capital Projects

<b>Project</b>	C0823-22053 Parklet furniture		
<b>Department</b>	Economic Development		
<b>Version</b>	Approved Budget	<b>Year</b>	2022

### Description

## Project Description

**Project Summary:** Purchase of tables, chairs, lights, flower beds to install on each parklets

**Study:**

**Level of Service Impact:**

**Annual Requirement Impact:** \$900

**Sommaire du projet:** Achat de tables, chaises, lumières et fleurs pour installation à chacune des placotoirs communautaires

**Étude:**

**Impact sur le niveau de service:**

**Impact sur le besoin annuel :** 900\$

### Budget

	Total	2022	2023	2024	2025	2026	2027-2031	2028
<b>Expenditures</b>								
<b>Material &amp; Supplies</b>								
Materials - Equipment	9,000	9,000						
	9,000	9,000						
<b>Expenditures Total</b>	<b>9,000</b>	<b>9,000</b>						
<b>Funding</b>								
<b>Reserves</b>								
Reserve - Asset Replacement	9,000	9,000						
	9,000	9,000						
<b>Funding Total</b>	<b>9,000</b>	<b>9,000</b>						



# TOWNSHIP OF RUSSELL

## Capital Projects

<b>Project</b>	C6790-22037 Books & DVDs		
<b>Department</b>	Library		
<b>Version</b>	Approved Budget	Year	2022

### Description

## Project Description

**Project Summary:** Purchase of new books and replacement of books  
**Study:** N/A  
**Level of Service Impact:** N/A  
**Annual Requirement Impact:** N/A

**Sommaire du projet:** Achat de nouveaux livres/documents et aussi le remplacement des livres/documents  
**Étude:** S/O  
**Impact sur le niveau de service:** S/O  
**Impact sur le besoin annuel:** S/O

### Budget

	Total	2022	2023	2024	2025	2026	2027-2031	2028
<b>Expenditures</b>								
<b>Material &amp; Supplies</b>								
Materials	48,500	48,500						
	48,500	48,500						
<b>Expenditures Total</b>	<b>48,500</b>	<b>48,500</b>						
<b>Funding</b>								
<b>Development Charge</b>								
DC Library	44,500	44,500						
	44,500	44,500						
<b>User fees, Donation / Sales</b>								
Donations	4,000	4,000						
	4,000	4,000						
<b>Funding Total</b>	<b>48,500</b>	<b>48,500</b>						

# TOWNSHIP OF RUSSELL

## Capital Projects

<b>Project</b>	C6790-22039 Computer Hardware		
<b>Department</b>	Library		
<b>Version</b>	Approved Budget	<b>Year</b>	2022

### Description

## Project Description

**Project Summary:** Computer for Kids section to be changed and new computer servers and transfer fees.

**Study:** N/A

**Level of Service Impact:** N/A

**Annual Requirement Impact:** N/A

**Sommaire du projet:** Ordinateur section enfant à Embrun à changer, un nouveau serveur informatique et les frais de transfert

**Étude:** S/O

**Impact sur le niveau de service:** S/O

**Impact sur le besoin annuel:** S/O

### Budget

	Total	2022	2023	2024	2025	2026	2027-2031	2028
<b>Expenditures</b>								
<b>Material &amp; Supplies</b>								
Materials	14,000	14,000						
	14,000	14,000						
<b>Expenditures Total</b>	<b>14,000</b>	<b>14,000</b>						
<b>Funding</b>								
<b>Reserves</b>								
Reserve- Library Asset Replacement	14,000	14,000						
	14,000	14,000						
<b>Funding Total</b>	<b>14,000</b>	<b>14,000</b>						