



Municipalité de
RUSSELL
Township

EMBRUN - NOTRE-DAME STREET STORM SEWERS REPLACEMENT AND ROAD IMPROVEMENTS

OPEN HOUSE FOR RESIDENTS



OPEN HOUSE DETAILS

Project: Embrun - Notre-Dame Street Storm Sewers Replacement and Improvement

Date: May 1st 2025

Time: 6h00 pm

Location: Gaston Patenaude Hall, 717 Notre-Dame, Embrun

Hosts: Jonathan Bourgon, Executive Director and François Landry, Project Manager

Attendees: Residents of Russell Township



Municipalité de
RUSSELL
Township

AGENDA

- Project description;
- Project Phasing
- Project location (Phase 1);
- Project schedule;
- Construction detour;
- Improvements to the road segment;
- Questions.



PROJECT DESCRIPTION

- Who (partners):
 - Owners: The Township of Russell (TWP) and the United Counties of Prescott and Russell (UCPR)
 - Contractor: To be determined (Tender process ongoing)
 - Residents: Private homeowners and business owners adjacent to construction
- What:
 - Complete replacement of the storm sewers on Notre-Dame Street from St-Guillaume Road to 964 Notre-Dame Street. The new storm sewers are designed to be more resilient to the climate change and address aging infrastructure.
 - Full road reconstruction. The reinstatement will include sidewalk replacement and road improvement.
 - Increase active transportation and pedestrian safety.

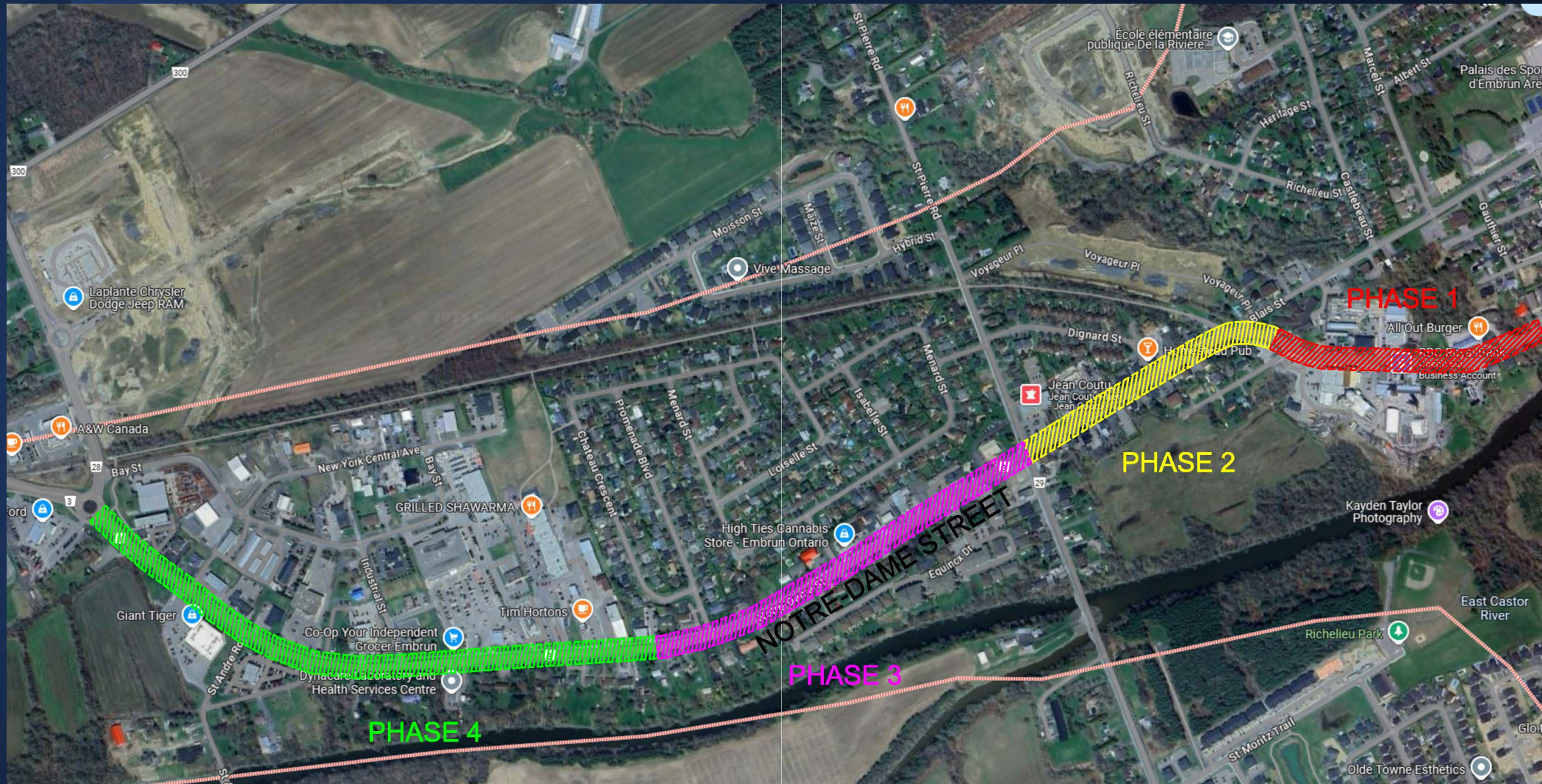
PROJECT PHASING

- Phase 1 = Red

Phase 2 = Yellow

Phase 3 = Purple

Phase 4 = Green

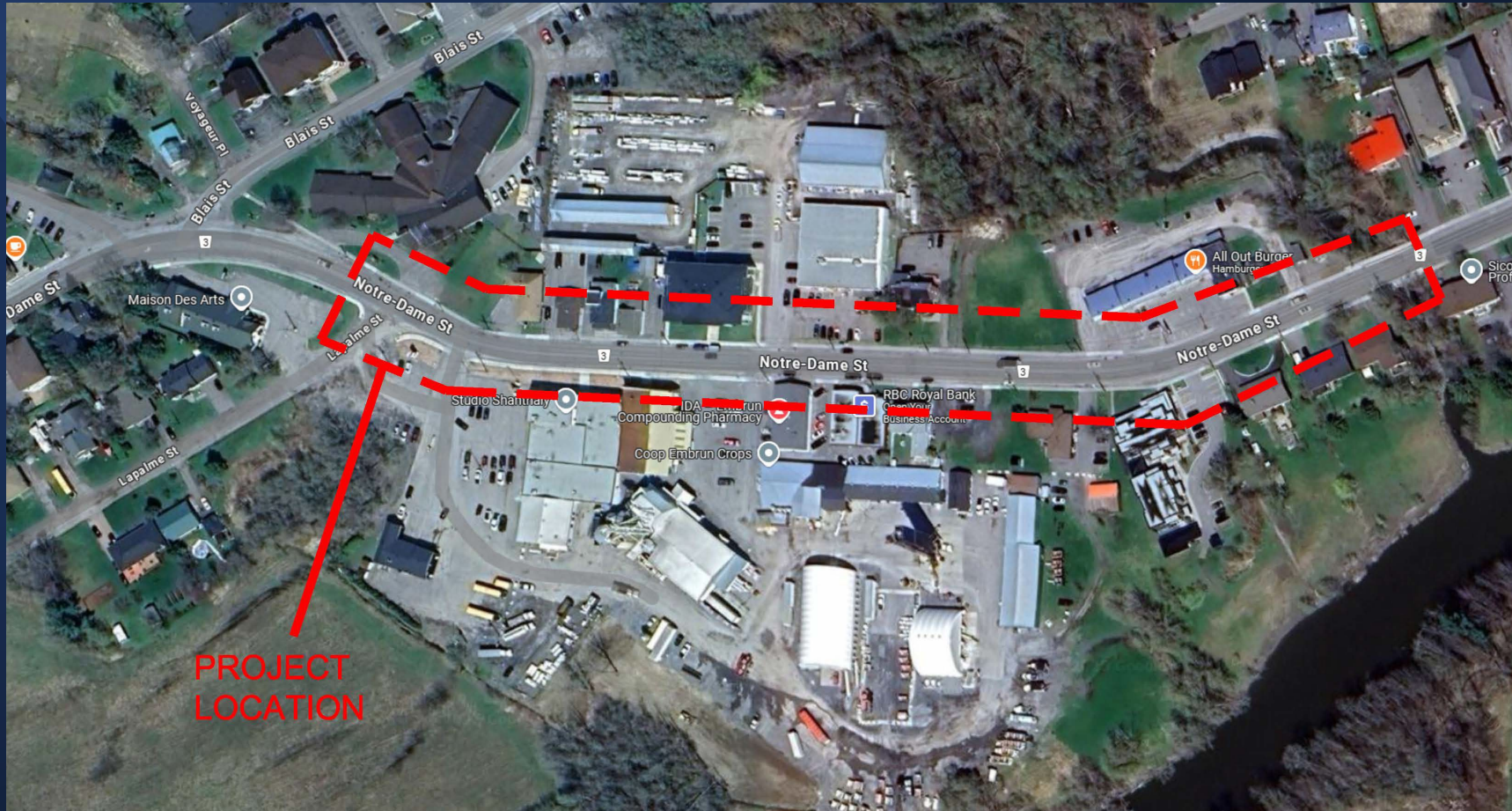




Municipalité de
RUSSELL
Township

PROJECT LOCATION (Phase 1)

- Where: Notre-Dame Street Storm Sewer – from 964 Notre-Dame Street to Lapalme Street





Municipalité de
RUSSELL
Township

PROJECT SCHEDULE PHASE 1

- When:
 - Construction of phase 1 is estimated to take 5-6 months, with final touch-ups and final landscaping in 2026
 - Staged construction:
 - Stage 1: During construction operations within the southern half of Notre-Dame Street, the northern half of Notre-Dame Street shall remain open with the use of portable traffic lights. The Contractor must ensure that traffic coming off private properties is able to determine what direction traffic is currently travelling in.
 - Stage 2: Construction operations within the same limits as Phase 1 but mirrored to allow for operations within the northern half of Notre-Dame Street.
 - Stage 3: Approximately 1 week of temporary closure of Notre-Dame Street to allow for the installation of underground infrastructure at Lapalme street.



Municipalité de
RUSSELL
Township

CONSTRUCTION DETOUR

- When: Notre-Dame Street would be closed at Blais street for approximately 1-2 weeks and will be limited to local traffic for the rest of the construction period.
- Main detour (shown in green on the image to the right) will be via St-Pierre Road, Route 300, and St-Augustin Street.
- Trucks will follow the same detour route.
- Municipal 511 will be updated frequently to reflect any changes in the detours.



IMPROVEMENTS TO NOTRE-DAME STREET (ALL PHASES)

- New stormwater sewers and outlets
- Repaving of the entire road segment
- Revising existing sidewalks to remove asphalt boulevard and replacing it with grassed boulevard
- Reconfiguring the Blais street intersection for improved geometry and design
- New traffic calming measures such as medians at pedestrian crossings
- Removal of specific entrances to allow for improved safety and traffic flow
- Burying of some utility infrastructure along Notre-Dame (mostly South side of the street)



IMPROVEMENTS TO NOTRE-DAME STREET (ALL PHASES)

- New multi-use pathway from Ste-Marie Rd to the roundabout (south side of Notre-Dame Street)
- New pedestrian crossings near Blais street and Domaine Street



Municipalité de
RUSSELL
Township

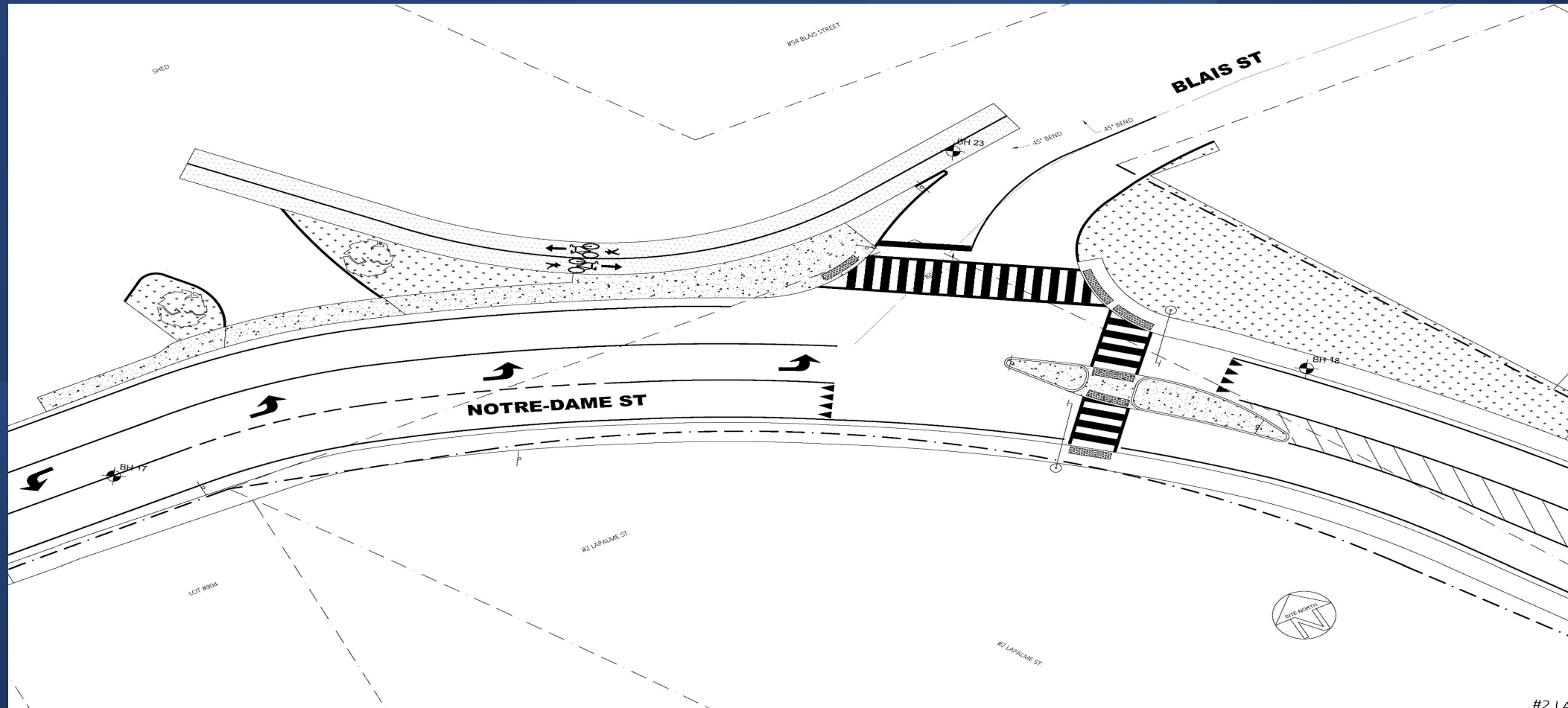
IMPROVEMENTS TO NOTRE-DAME STREET (ALL PHASES)

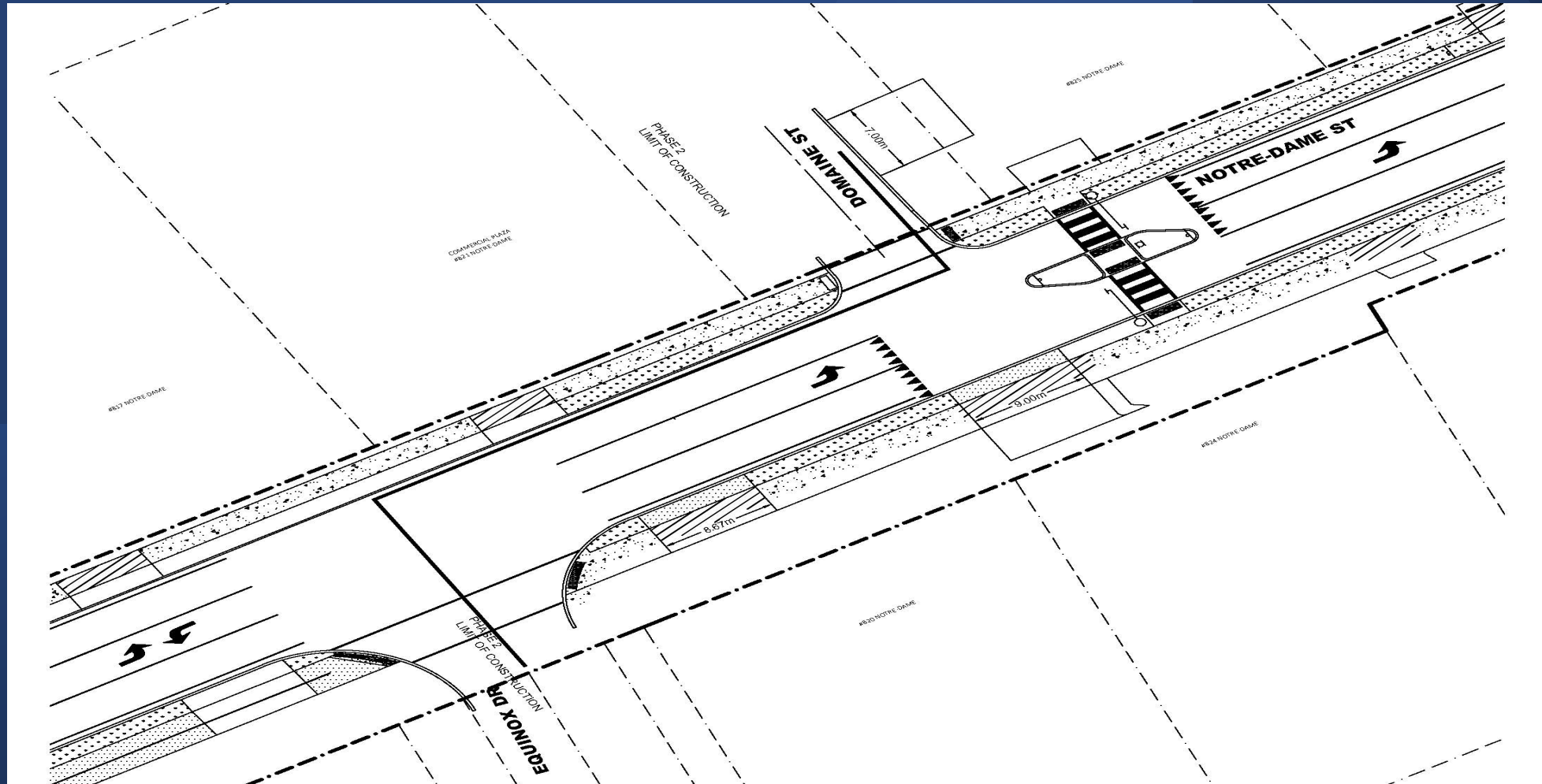




Municipalité de
RUSSELL
Township

IMPROVEMENTS TO NOTRE-DAME STREET (ALL PHASES)

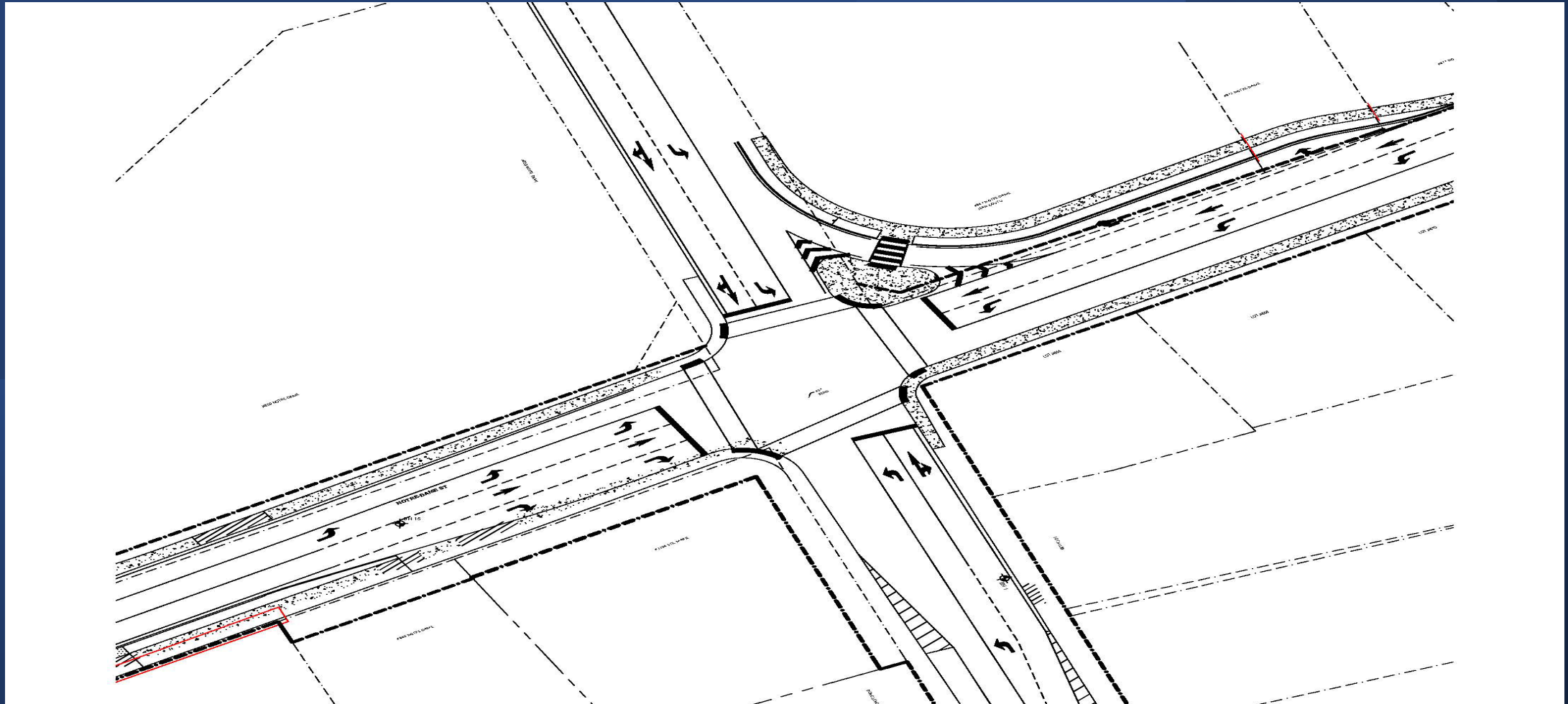






IMPROVEMENTS TO NOTRE-DAME STREET (ALL PHASES)

- Improving traffic flow at St-Pierre/ Notre-Dame intersection
- Closure of St-André, and re-integrating Séguin street as the major collector, which will include a new traffic signal at the Intersection of Notre-Dame street and Séguin street.





Municipalité de
RUSSELL
Township

IMPROVEMENTS TO NOTRE-DAME STREET (ALL PHASES)





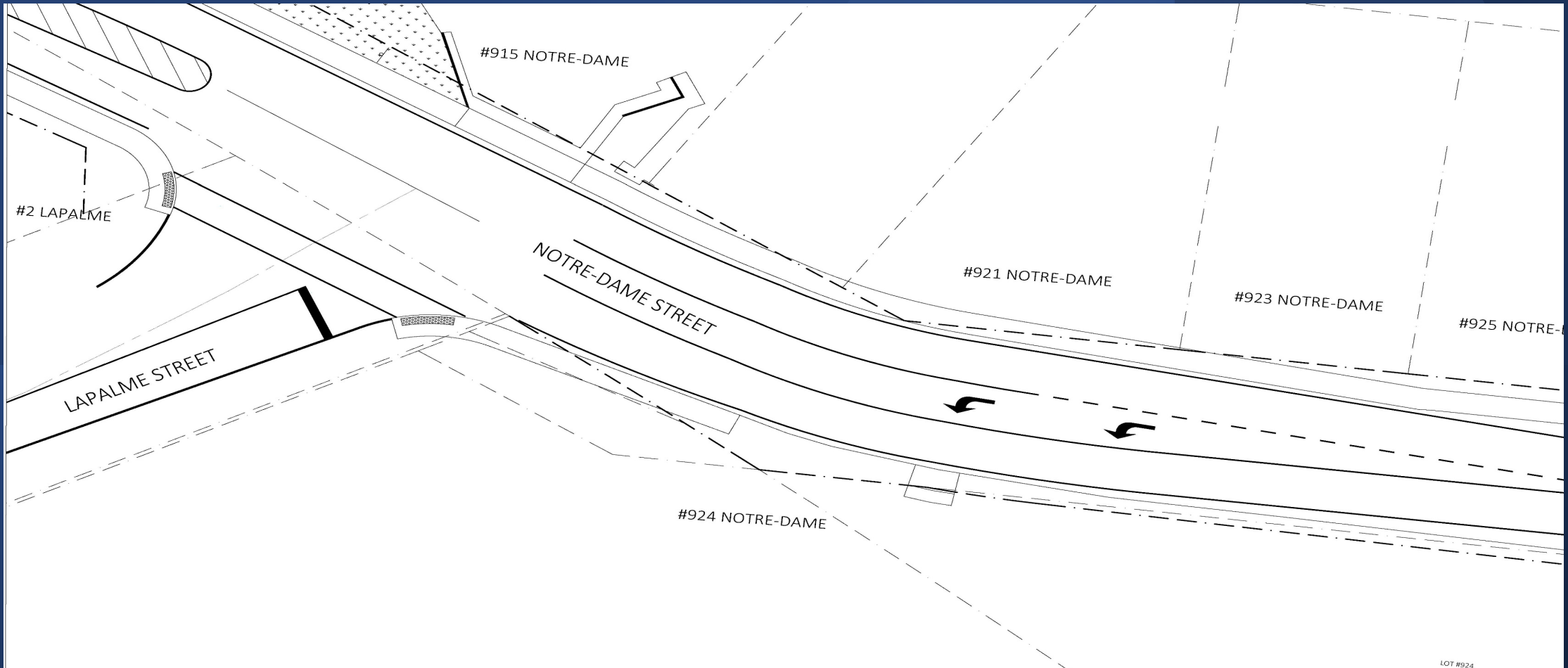
IMPROVEMENTS TO NOTRE-DAME STREET (ALL PHASES)

- New turning lanes on Notre-Dame street at Lapalme street, Promenade and Industrial.
- New turning lanes on Industrial.
- New *two-way left turn* lane from Blais street to the existing *two-way left turn* lane at Promenade Blvd.



Municipalité de
RUSSELL
Township

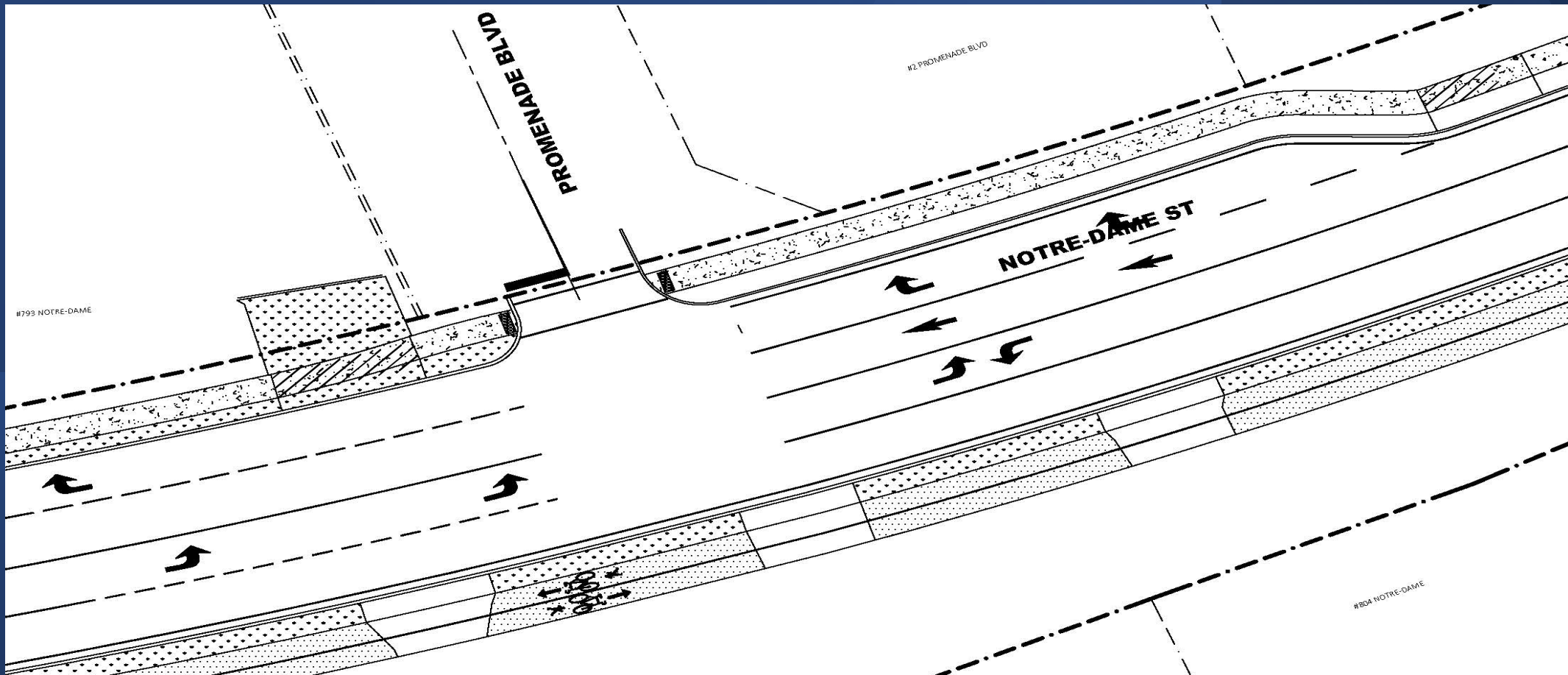
IMPROVEMENTS TO NOTRE-DAME STREET (ALL PHASES)





Municipalité de
RUSSELL
Township

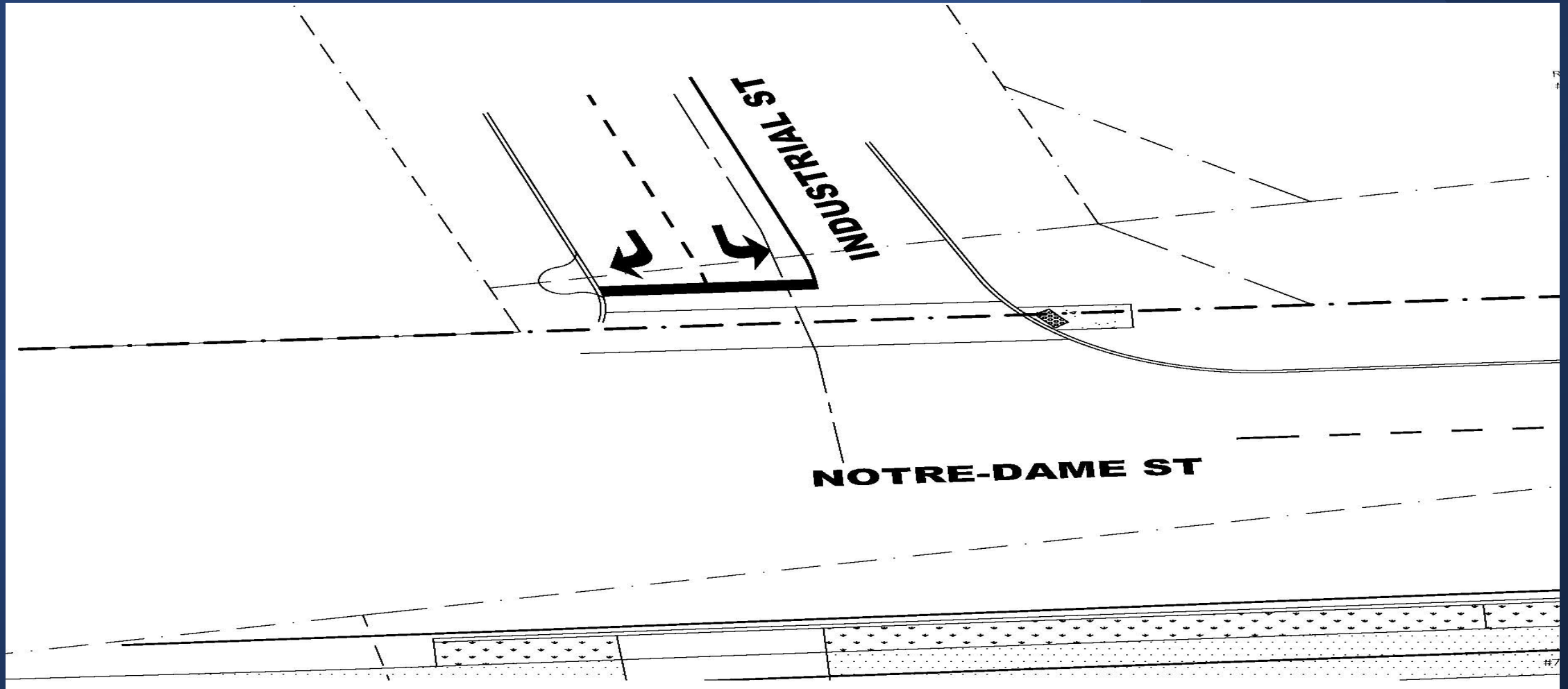
IMPROVEMENTS TO NOTRE-DAME STREET (ALL PHASES)





Municipalité de
RUSSELL
Township

IMPROVEMENTS TO NOTRE-DAME STREET (ALL PHASES)





PROJECTED SCHEDULE FOR THE REMAINING PROJECT

- Phase 2 to 4 will be completed one after the other.
- Progress for the construction will be posted on the Township website.



Municipalité de
RUSSELL
Township

Questions? 😊

Thank you